
Product Name: GPR1 Rabbit Polyclonal Antibody**Catalog #: APRab11617**

For research use only.

Summary

Description	Rabbit polyclonal Antibody
Host	Rabbit
Application	ICC/IF,ELISA
Reactivity	Human,Mouse,Rat
Conjugation	Unconjugated
Modification	Unmodified
Isotype	IgG
Clonality	Polyclonal
Form	Liquid
Concentration	1mg/ml
Storage	Aliquot and store at -20°C (valid for 12 months). Avoid freeze/thaw cycles.
Shipping	Ice bags
Buffer	Liquid in PBS containing 50% glycerol, 0.5% protective protein and 0.02% New type preservative N.
Purification	Affinity purification

Application

Dilution Ratio ICC/IF 1:200-1:1000,ELISA 1:5000-1:10000

Molecular Weight

Antigen Information

Gene Name	GPR1
Alternative Names	GPR1; G-protein coupled receptor 1
Gene ID	2825.0
SwissProt ID	P46091
Immunogen	The antiserum was produced against synthesized peptide derived from human GPR1. AA range:121-170

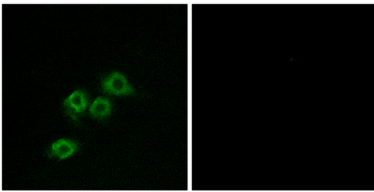
Background

function:Orphan receptor. Probable opioid receptor. Can act as a co-receptor for HIV-1.,similarity:Belongs to the G-protein

coupled receptor 1 family.,tissue specificity:Expressed in hippocampus.,function:Orphan receptor. Probable opioid receptor. Can act as a co-receptor for HIV-1.,similarity:Belongs to the G-protein coupled receptor 1 family.,tissue specificity:Expressed in hippocampus.,

Research Area

Image Data



Immunofluorescence analysis of MCF7 cells, using GPR1 Antibody. The picture on the right is blocked with the synthesized peptide.