

Product Name: GnRH I Rabbit Polyclonal Antibody**Catalog #: APRab11566**

For research use only.

Summary

Description	Rabbit polyclonal Antibody
Host	Rabbit
Application	IHC, ICC/IF, ELISA
Reactivity	Human, Rat, Mouse
Conjugation	Unconjugated
Modification	Unmodified
Isotype	IgG
Clonality	Polyclonal
Form	Liquid
Concentration	1mg/ml
Storage	Aliquot and store at -20°C (valid for 12 months). Avoid freeze/thaw cycles.
Shipping	Ice bags
Buffer	Liquid in PBS containing 50% glycerol, 0.5% protective protein and 0.02% New type preservative N.
Purification	Affinity purification

Application

Dilution Ratio IHC 1:100-1:300, ICC/IF 1:50-1:200, ELISA 1:5000-1:20000

Molecular Weight

Antigen Information

Gene Name	GNRH1
Alternative Names	GNRH1; GNRH; GRH; LHRH; Progonadoliberin-1; Progonadoliberin I
Gene ID	2796.0
SwissProt ID	P01148
Immunogen	The antiserum was produced against synthesized peptide derived from human GnRH I. AA range:43-92

Background

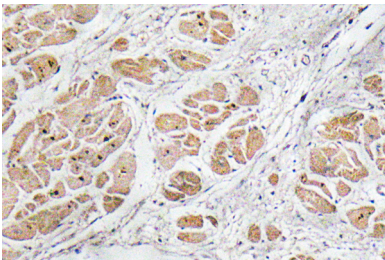
gonadotropin releasing hormone 1(GNRH1) Homo sapiens This gene encodes a preproprotein that is proteolytically

processed to generate a peptide that is a member of the gonadotropin-releasing hormone (GnRH) family of peptides. Alternative splicing results in multiple transcript variants, at least one of which is secreted and then cleaved to generate gonadoliberin-1 and GnRH-associated peptide 1. Gonadoliberin-1 stimulates the release of luteinizing and follicle stimulating hormones, which are important for reproduction. Mutations in this gene are associated with hypogonadotropic hypogonadism. [provided by RefSeq, Nov 2015],function:Stimulates the secretion of gonadotropins; it stimulates the secretion of both luteinizing and follicle-stimulating hormones.,online information:Gonadotropin-releasing hormone entry,pharmaceutical:Available under the names Factrel (Ayerst Labs), Lutrepulse or Lutrelef (Ferring Pharmaceuticals) and Relisorm (Serono). Used in evaluating hypothalamic-pituitary gonadotropic function.,similarity:Belongs to the GnRH family.,

Research Area

GnRH;

Image Data



Immunohistochemistry analysis of GnRH I antibody in paraffin-embedded human heart tissue.