
Product Name: GNG12 Rabbit Polyclonal Antibody**Catalog #: APRab11554**

For research use only.

Summary

Description	Rabbit polyclonal Antibody
Host	Rabbit
Application	IHC,ELISA
Reactivity	Human,Mouse
Conjugation	Unconjugated
Modification	Unmodified
Isotype	IgG
Clonality	Polyclonal
Form	Liquid
Concentration	1mg/ml
Storage	Aliquot and store at -20°C (valid for 12 months). Avoid freeze/thaw cycles.
Shipping	Ice bags
Buffer	Liquid in PBS containing 50% glycerol, 0.5% protective protein and 0.02% New type preservative N.
Purification	Affinity purification

Application

Dilution Ratio IHC 1:50-1:200,ELISA 1:5000-1:20000

Molecular Weight

Antigen Information

Gene Name	GNG12
Alternative Names	Guanine nucleotide-binding protein G(I)/G(S)/G(O) subunit gamma-12
Gene ID	55970.0
SwissProt ID	Q9UBI6
Immunogen	Synthesized peptide derived from human GNG12 AA range: 1-50

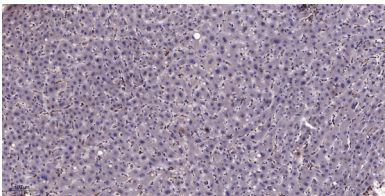
Background

function:Guanine nucleotide-binding proteins (G proteins) are involved as a modulator or transducer in various transmembrane signaling systems. The beta and gamma chains are required for the GTPase activity, for replacement of GDP by

GTP, and for G protein-effector interaction.,similarity:Belongs to the G protein gamma family.,subunit:G proteins are composed of 3 units, alpha, beta and gamma.,function:Guanine nucleotide-binding proteins (G proteins) are involved as a modulator or transducer in various transmembrane signaling systems. The beta and gamma chains are required for the GTPase activity, for replacement of GDP by GTP, and for G protein-effector interaction.,similarity:Belongs to the G protein gamma family.,subunit:G proteins are composed of 3 units, alpha, beta and gamma.,

Research Area

Image Data



Immunohistochemical analysis of paraffin-embedded human liver cancer. 1, Antibody was diluted at 1:200 (4° overnight) . 2, Tris-EDTA,pH9.0 was used for antigen retrieval. 3,Secondary antibody was diluted at 1:200 (room temperature, 45min) .