

Product Name: GM130 Rabbit Polyclonal Antibody**Catalog #: APRab11528**

For research use only.

Summary

Description	Rabbit polyclonal Antibody
Host	Rabbit
Application	WB,ICC/IF,ELISA
Reactivity	Human,Mouse,Rat
Conjugation	Unconjugated
Modification	Unmodified
Isotype	IgG
Clonality	Polyclonal
Form	Liquid
Concentration	1mg/ml
Storage	Aliquot and store at -20°C (valid for 12 months). Avoid freeze/thaw cycles.
Shipping	Ice bags
Buffer	Liquid in PBS containing 50% glycerol, 0.5% protective protein and 0.02% New type preservative N.
Purification	Affinity purification

Application

Dilution Ratio	WB 1:500-1:2000,ICC/IF 1:50-1:200,ELISA 1:5000-1:20000
Molecular Weight	112-130kDa

Antigen Information

Gene Name	GOLGA2
Alternative Names	Golgin subfamily A member 2 (130 kDa cis-Golgi matrix protein;GM130;GM130 autoantigen;Golgin-95)
Gene ID	2801.0
SwissProt ID	Q08379
Immunogen	Synthesized peptide derived from human GM130

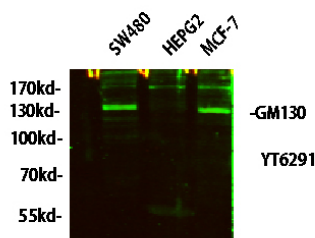
Background

The Golgi apparatus, which participates in glycosylation and transport of proteins and lipids in the secretory pathway, consists

of a series of stacked cisternae (flattened membrane sacs). Interactions between the Golgi and microtubules are thought to be important for the reorganization of the Golgi after it fragments during mitosis. This gene encodes one of the golgins, a family of proteins localized to the Golgi. This encoded protein has been postulated to play roles in the stacking of Golgi cisternae and in vesicular transport. Several alternatively spliced transcript variants of this gene have been described, but the full-length nature of these variants has not been determined. [provided by RefSeq, Feb 2010],domain:Extended rod-like protein with coiled-coil domains.,function:Golgi auto-antigen; probably involved in maintaining cis-Golgi structure.,sequence caution:Sequence differs from that shown after position 814 due to an internal deletion.,similarity:Belongs to the GOLGA2 family.,subunit:Part of a larger oligomeric complex. Interacts with p115 (By similarity). Interacts with RAB1B that has been activated by GTP-binding. Interacts with GORASP1/GRASP65 and ZFPL1.,

Research Area

Image Data



Western blot analysis of lysates from HT-29, NIH/3T3, and HepG2 cells, GM130 Rabbit Polyclonal Antibody was diluted at 1:1000, 4° over night, secondary antibody was diluted at 1:10000, 37° 1hour.