
Product Name: Glypican-2 Rabbit Polyclonal Antibody**Catalog #: APRab11521**

For research use only.

Summary

Description	Rabbit polyclonal Antibody
Host	Rabbit
Application	WB,IHC,ICC/IF
Reactivity	Human,Rat,Mouse
Conjugation	Unconjugated
Modification	Unmodified
Isotype	IgG
Clonality	Polyclonal
Form	Liquid
Concentration	1mg/ml
Storage	Aliquot and store at -20°C (valid for 12 months). Avoid freeze/thaw cycles.
Shipping	Ice bags
Buffer	Liquid in PBS containing 50% glycerol, 0.5% protective protein and 0.02% New type preservative N.
Purification	Affinity purification

Application

Dilution Ratio	WB 1:500-1:2000,IHC 1:50-1:200,ICC/IF 1:50-1:200
Molecular Weight	65kDa

Antigen Information

Gene Name	GPC2
Alternative Names	Glypican-2 [Cleaved into: Secreted glypican-2]
Gene ID	221914.0
SwissProt ID	Q8N158
Immunogen	Synthesized peptide derived from human Glypican-2

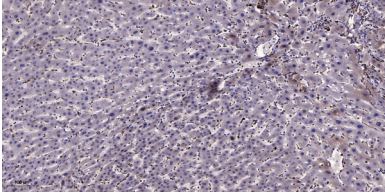
Background

function:Cell surface proteoglycan that bears heparan sulfate. May fulfill a function related to the motile behaviors of developing neurons.,similarity:Belongs to the glypican family.,function:Cell surface proteoglycan that bears heparan sulfate.

May fulfill a function related to the motile behaviors of developing neurons.,similarity:Belongs to the glypican family.,

Research Area

Image Data



Immunohistochemical analysis of paraffin-embedded human liver cancer. 1, Antibody was diluted at 1:200 (4° overnight) . 2, Tris-EDTA,pH9.0 was used for antigen retrieval. 3,Secondary antibody was diluted at 1:200 (room temperature, 45min) .