

---

**Product Name: Glycerate Kinase Rabbit Polyclonal Antibody****Catalog #: APRab11511**

For research use only.

**Summary**

<b>Description</b>	Rabbit polyclonal Antibody
<b>Host</b>	Rabbit
<b>Application</b>	WB,IHC,ICC/IF,ELISA
<b>Reactivity</b>	Human,Mouse,Rat
<b>Conjugation</b>	Unconjugated
<b>Modification</b>	Unmodified
<b>Isotype</b>	IgG
<b>Clonality</b>	Polyclonal
<b>Form</b>	Liquid
<b>Concentration</b>	1mg/ml
<b>Storage</b>	Aliquot and store at -20°C (valid for 12 months). Avoid freeze/thaw cycles.
<b>Shipping</b>	Ice bags
<b>Buffer</b>	Liquid in PBS containing 50% glycerol, 0.5% protective protein and 0.02% New type preservative N.
<b>Purification</b>	Affinity purification

**Application**

<b>Dilution Ratio</b>	WB 1:500-1:2000,IHC 1:100-1:300,ICC/IF 1:200-1:1000,ELISA 1:10000-1:20000
<b>Molecular Weight</b>	60kDa

**Antigen Information**

<b>Gene Name</b>	GLYCK
<b>Alternative Names</b>	GLYCK; HBEBP4; LP5910; Glycerate kinase; HBeAg-binding protein 4
<b>Gene ID</b>	132158.0
<b>SwissProt ID</b>	Q8IVS8
<b>Immunogen</b>	The antiserum was produced against synthesized peptide derived from human GLCK. AA range:101-150

**Background**

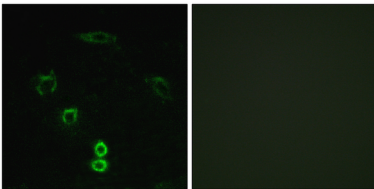
This locus encodes a member of the glycerate kinase type-2 family. The encoded enzyme catalyzes the phosphorylation of (R)-

glycerate and may be involved in serine degradation and fructose metabolism. Decreased activity of the encoded enzyme may be associated with the disease D-glyceric aciduria. Alternatively spliced transcript variants have been described. [provided by RefSeq, Jan 2009],catalytic activity:ATP + (R)-glycerate = ADP + 3-phospho-(R)-glycerate.,disease:Defects in GLYCTK are the cause of D-glyceric acidemia [MIM:220120]. It is characterized by nonketotic hyperglycinemia with the excretion of D-glyceric acid in the urine and the presence of this substance in the serum.,similarity:Belongs to the glycerate kinase type-2 family.,tissue specificity:Widely expressed.,

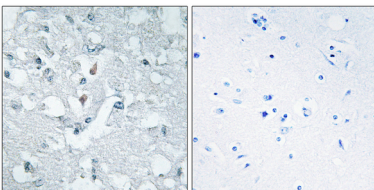
## Research Area

Glycine; serine and threonine metabolism;Glycerolipid metabolism;Glyoxylate and dicarboxylate metabolism;

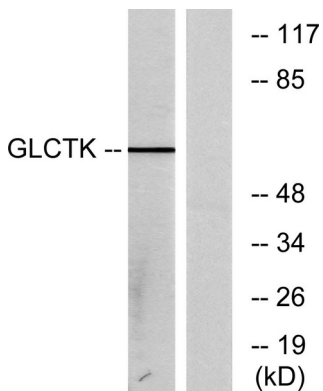
## Image Data



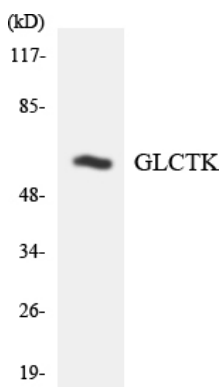
Immunofluorescence analysis of A549 cells, using GLCTK Antibody. The picture on the right is blocked with the synthesized peptide.



Immunohistochemistry analysis of paraffin-embedded human brain tissue, using GLCTK Antibody. The picture on the right is blocked with the synthesized peptide.



Western blot analysis of lysates from NIH/3T3 cells, using GLCTK Antibody. The lane on the right is blocked with the synthesized peptide.



Western blot analysis of the lysates from HUVEC cells using GLCTK antibody.

