
Product Name: GluR- δ 1 Rabbit Polyclonal Antibody**Catalog #: APRab11496**

For research use only.

Summary

Description	Rabbit polyclonal Antibody
Host	Rabbit
Application	WB,IHC,ICC/IF,ELISA
Reactivity	Human,Mouse,Rat
Conjugation	Unconjugated
Modification	Unmodified
Isotype	IgG
Clonality	Polyclonal
Form	Liquid
Concentration	1mg/ml
Storage	Aliquot and store at -20°C (valid for 12 months). Avoid freeze/thaw cycles.
Shipping	Ice bags
Buffer	Liquid in PBS containing 50% glycerol, 0.5% protective protein and 0.02% New type preservative N.
Purification	Affinity purification

Application

Dilution Ratio	WB 1:500-1:2000,IHC 1:100-1:300,ICC/IF 1:50-1:200,ELISA 1:20000-1:40000
Molecular Weight	95kDa

Antigen Information

Gene Name	GRID1
Alternative Names	GRID1; KIAA1220; Glutamate receptor delta-1 subunit; GluR delta-1 subunit
Gene ID	2894.0
SwissProt ID	Q9ULK0
Immunogen	The antiserum was produced against synthesized peptide derived from human GRID1. AA range:831-880

Background

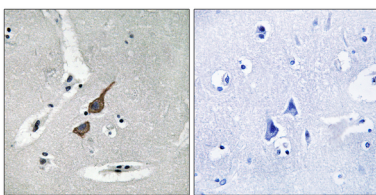
This gene encodes a subunit of glutamate receptor channels. These channels mediate most of the fast excitatory synaptic

transmission in the central nervous system and play key roles in synaptic plasticity.[provided by RefSeq, Jan 2009],function:Receptor for glutamate. L-glutamate acts as an excitatory neurotransmitter at many synapses in the central nervous system. The postsynaptic actions of Glu are mediated by a variety of receptors that are named according to their selective agonists.,similarity:Belongs to the glutamate-gated ion channel (TC 1.A.10) family.,

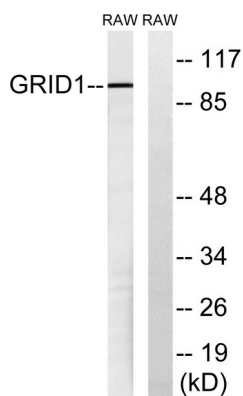
Research Area

Neuroactive ligand-receptor interaction;

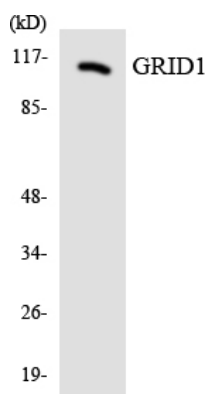
Image Data



Immunohistochemistry analysis of paraffin-embedded human brain tissue, using GRID1 Antibody. The picture on the right is blocked with the synthesized peptide.



Western blot analysis of lysates from RAW264.7 cells, using GRID1 Antibody. The lane on the right is blocked with the synthesized peptide.



Western blot analysis of the lysates from RAW264.7 cells using GRID1 antibody.