
Product Name: Glucagon Receptor Rabbit Polyclonal Antibody**Catalog #: APRab11482**

For research use only.

Summary

Description	Rabbit polyclonal Antibody
Host	Rabbit
Application	WB,ICC/IF,ELISA
Reactivity	Human,Mouse,Rat
Conjugation	Unconjugated
Modification	Unmodified
Isotype	IgG
Clonality	Polyclonal
Form	Liquid
Concentration	1mg/ml
Storage	Aliquot and store at -20°C (valid for 12 months). Avoid freeze/thaw cycles.
Shipping	Ice bags
Buffer	Liquid in PBS containing 50% glycerol, 0.5% protective protein and 0.02% New type preservative N.
Purification	Affinity purification

Application

Dilution Ratio	WB 1:500-1:2000,ICC/IF 1:200-1:1000,ELISA 1:5000-1:10000
Molecular Weight	54kDa

Antigen Information

Gene Name	GCGR
Alternative Names	GCGR; Glucagon receptor; GL-R
Gene ID	2642.0
SwissProt ID	P47871
Immunogen	The antiserum was produced against synthesized peptide derived from human GLR. AA range:95-144

Background

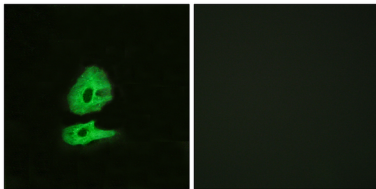
glucagon receptor(GCGR) Homo sapiens The protein encoded by this gene is a glucagon receptor that is important in

controlling blood glucose levels. Defects in this gene are a cause of non-insulin-dependent diabetes mellitus (NIDDM). [provided by RefSeq, Jan 2010],disease:It is a candidate for certain defects in non-insulin-dependent diabetes mellitus (NIDDM). The variant in position 40 (Ser) is found in some NIDDM patients, but also in nondiabetic subjects.,function:This is a receptor for glucagon which plays a central role in regulating the level of blood glucose by controlling the rate of hepatic glucose production and insulin secretion. The activity of this receptor is mediated by G proteins which activate adenylyl cyclase and also a phosphatidylinositol-calcium second messenger system.,similarity:Belongs to the G-protein coupled receptor 2 family.,

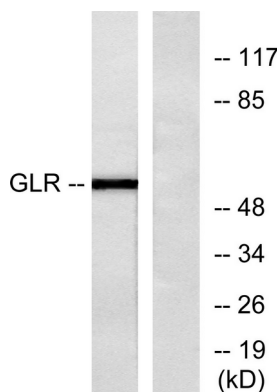
Research Area

Neuroactive ligand-receptor interaction;

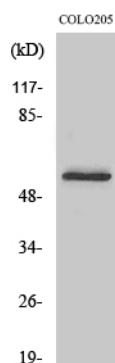
Image Data



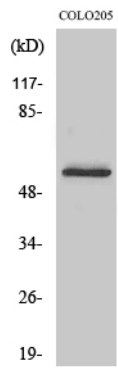
Immunofluorescence analysis of HeLa cells, using GLR Antibody. The picture on the right is blocked with the synthesized peptide.



Western blot analysis of lysates from COLO205 cells, using GLR Antibody. The lane on the right is blocked with the synthesized peptide.



Western Blot analysis of various cells using Glucagon Receptor Polyclonal Antibody



Western Blot analysis of COLO205 cells using Glucagon Receptor Polyclonal Antibody