

Product Name: GIT2 Rabbit Polyclonal Antibody**Catalog #: APRab11450**

For research use only.

Summary

Description	Rabbit polyclonal Antibody
Host	Rabbit
Application	WB,IHC,ICC/IF,ELISA
Reactivity	Human,Mouse,Rat
Conjugation	Unconjugated
Modification	Unmodified
Isotype	IgG
Clonality	Polyclonal
Form	Liquid
Concentration	1mg/ml
Storage	Aliquot and store at -20°C (valid for 12 months). Avoid freeze/thaw cycles.
Shipping	Ice bags
Buffer	Liquid in PBS containing 50% glycerol, 0.5% protective protein and 0.02% New type preservative N.
Purification	Affinity purification

Application

Dilution Ratio	WB 1:500-1:2000,IHC 1:100-1:500,ICC/IF 1:50-1:200,ELISA 1:5000-1:20000
Molecular Weight	84kDa

Antigen Information

Gene Name	GIT2
Alternative Names	GIT2; KIAA0148; ARF GTPase-activating protein GIT2; ARF GAP GIT2; Cool-interacting tyrosine-phosphorylated protein 2; CAT-2; CAT2; G protein-coupled receptor kinase-interactor 2; GRK-interacting protein 2
Gene ID	9815.0
SwissProt ID	Q14161
Immunogen	The antiserum was produced against synthesized peptide derived from human GIT2. AA range:361-410

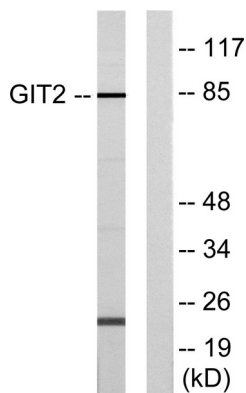
Background

This gene encodes a member of the GIT protein family, which interact with G protein-coupled receptor kinases and possess ADP-ribosylation factor (ARF) GTPase-activating protein (GAP) activity. GIT proteins traffic between cytoplasmic complexes, focal adhesions, and the cell periphery, and interact with Pak interacting exchange factor beta (PIX) to form large oligomeric complexes that transiently recruit other proteins. GIT proteins regulate cytoskeletal dynamics and participate in receptor internalization and membrane trafficking. This gene has been shown to repress lamellipodial extension and focal adhesion turnover, and is thought to regulate cell motility. This gene undergoes extensive alternative splicing to generate multiple isoforms, but the full-length nature of some of these variants has not been determined. The various isoforms have functional differences, with respect to ARF GAP activity and to Galternative products:Additional isoforms seem to exist,function:GTPase-activating protein for the ADP ribosylation factor family.,similarity:Contains 1 Arf-GAP domain.,similarity:Contains 3 ANK repeats.,subunit:Interacts with TGFB111 (By similarity). Interacts with G protein-coupled receptor kinases. Associates with paxillin. Also interacts with PIX exchange factors.,

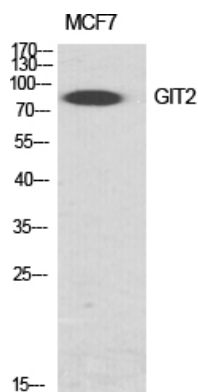
Research Area

Endocytosis;

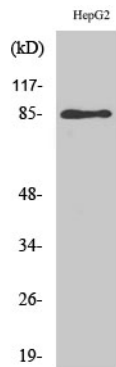
Image Data



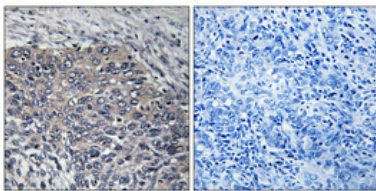
Western blot analysis of lysates from HepG2 cells, using GIT2 Antibody. The lane on the right is blocked with the synthesized peptide.



Western Blot analysis of various cells using GIT2 Polyclonal Antibody diluted at 1 : 1000 cells nucleus extracted by Minute TM Cytoplasmic and Nuclear Fractionation kit (SC-003, Invent biotech, MN, USA) .



Western Blot analysis of HepG2 cells using GIT2 Polyclonal Antibody diluted at 1: 1 000 cells nucleus extracted by Minute TM Cytoplasmic and Nuclear Fractionation kit (SC-003, Invent biotech, MN, USA) .



Immunohistochemical analysis of paraffin-embedded Human cervix cancer. Antibody was diluted at 1:100 (4°, overnight) . High-pressure and temperature Tris-EDTA, pH 8.0 was used for antigen retrieval. Negative control (right) obtained from antibody was pre-absorbed by immunogen peptide.