
Product Name: GIT1 Rabbit Polyclonal Antibody**Catalog #: APRab11449**

For research use only.

Summary

Description	Rabbit polyclonal Antibody
Host	Rabbit
Application	WB,IHC,ICC/IF,ELISA
Reactivity	Human,Mouse,Rat
Conjugation	Unconjugated
Modification	Unmodified
Isotype	IgG
Clonality	Polyclonal
Form	Liquid
Concentration	1mg/ml
Storage	Aliquot and store at -20°C (valid for 12 months). Avoid freeze/thaw cycles.
Shipping	Ice bags
Buffer	Liquid in PBS containing 50% glycerol, 0.5% protective protein and 0.02% New type preservative N.
Purification	Affinity purification

Application

Dilution Ratio	WB 1:500-1:2000,IHC 1:100-1:300,ICC/IF 1:50-1:200,ELISA 1:10000-1:20000
Molecular Weight	95kDa

Antigen Information

Gene Name	GIT1
Alternative Names	GIT1; ARF GTPase-activating protein GIT1; ARF GAP GIT1; Cool-associated and tyrosine-phosphorylated protein 1; CAT-1; CAT1; G protein-coupled receptor kinase-interactor 1; GRK-interacting protein 1
Gene ID	28964.0
SwissProt ID	Q9Y2X7
Immunogen	The antiserum was produced against synthesized peptide derived from human GIT1. AA range:561-610

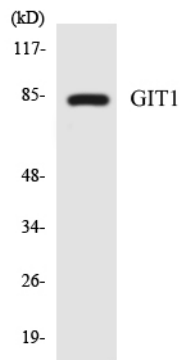
Background

domain: The paxillin-binding domain is masked in the full-length protein and is regulated by ARHGEF6, function: GTPase-activating protein for the ADP ribosylation factor family. May serve as a scaffold to bring together molecules to form signaling modules controlling vesicle trafficking, adhesion and cytoskeletal organization. Increases the speed of cell migration, as well as the size and rate of formation of protrusions, possibly by targeting PAK1 to adhesions and the leading edge of lamellipodia. Sequesters inactive non-tyrosine-phosphorylated paxillin in cytoplasmic complexes., PTM: Phosphorylated on tyrosine residues by PTK2 and SRC in growing fibroblasts. Tyrosine-phosphorylation is increased following cell spreading on fibronectin, decreased in cells arrested in mitosis and increased in the ensuing G1 phase., similarity: Contains 1 Arf-GAP domain., similarity: Contains 3 ANK repeats., subcellular location: Cycles between at least 3 distinct intracellular compartments, including focal adhesions, cytoplasmic complexes and membrane protrusions. During cell migration, when cells detach, moves from the adhesions into the cytoplasmic complexes towards the leading edge, while, when cells adhere, it is found in vinculin-containing adhesions. Recruitment to adhesions may be mediated by active tyrosine-phosphorylated paxillin., subunit: Interacts with G protein-coupled receptor kinases: ADRBK1/GRK2, PPFIA1 and PPFIA4. Interacts with ARHGEF6/alpha-PIX, with ARHGEF7/beta-PIX, with PXN/paxillin and with PTK2/FAK (By similarity). Component of cytoplasmic complexes, which also contain PXN, ARHGEF6 and PAK1. Interacts with TGFB111., domain: The paxillin-binding domain is masked in the full-length protein and is regulated by ARHGEF6, function: GTPase-activating protein for the ADP ribosylation factor family. May serve as a scaffold to bring together molecules to form signaling modules controlling vesicle trafficking, adhesion and cytoskeletal organization. Increases the speed of cell migration, as well as the size and rate of formation of protrusions, possibly by targeting PAK1 to adhesions and the leading edge of lamellipodia. Sequesters inactive non-tyrosine-phosphorylated paxillin in cytoplasmic complexes., PTM: Phosphorylated on tyrosine residues by PTK2 and SRC in growing fibroblasts. Tyrosine-phosphorylation is increased following cell spreading on fibronectin, decreased in cells arrested in mitosis and increased in the ensuing G1 phase., similarity: Contains 1 Arf-GAP domain., similarity: Contains 3 ANK repeats., subcellular location: Cycles between at least 3 distinct intracellular compartments, including focal adhesions, cytoplasmic complexes and membrane protrusions. During cell migration, when cells detach, moves from the adhesions into the cytoplasmic complexes towards the leading edge, while, when cells adhere, it is found in vinculin-containing adhesions. Recruitment to adhesions may be mediated by active tyrosine-phosphorylated paxillin., subunit: Interacts with G protein-coupled receptor kinases: ADRBK1/GRK2, PPFIA1 and PPFIA4. Interacts with ARHGEF6/alpha-PIX, with ARHGEF7/beta-PIX, with PXN/paxillin and with PTK2/FAK (By similarity). Component of cytoplasmic complexes, which also contain PXN, ARHGEF6 and PAK1. Interacts with TGFB111.,

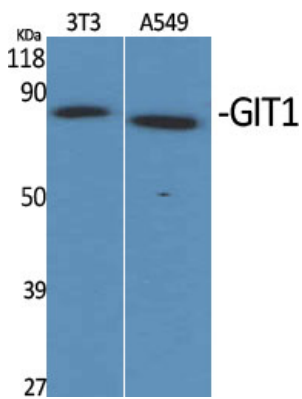
Research Area

Endocytosis; Regulates Actin and Cytoskeleton; Epithelial cell signaling in Helicobacter pylori infection;

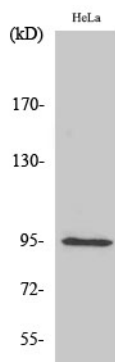
Image Data



Western blot analysis of the lysates from 293 cells using GIT1 antibody.



Western Blot analysis of various cells using GIT1 Polyclonal Antibody



Western Blot analysis of HepG2 cells using GIT1 Polyclonal Antibody