

**Product Name: GIDRP88 Rabbit Polyclonal Antibody****Catalog #: AP Rab11440**

For research use only.

**Summary**

<b>Description</b>	Rabbit polyclonal Antibody
<b>Host</b>	Rabbit
<b>Application</b>	WB,IHC,ICC/IF,ELISA
<b>Reactivity</b>	Human,Mouse,Monkey
<b>Conjugation</b>	Unconjugated
<b>Modification</b>	Unmodified
<b>Isotype</b>	IgG
<b>Clonality</b>	Polyclonal
<b>Form</b>	Liquid
<b>Concentration</b>	1mg/ml
<b>Storage</b>	Aliquot and store at -20°C (valid for 12 months). Avoid freeze/thaw cycles.
<b>Shipping</b>	Ice bags
<b>Buffer</b>	Liquid in PBS containing 50% glycerol, 0.5% protective protein and 0.02% New type preservative N.
<b>Purification</b>	Affinity purification

**Application**

<b>Dilution Ratio</b>	WB 1:500-1:2000,IHC 1:100-1:300,ICC/IF 1:50-1:200,ELISA 1:20000-1:40000
<b>Molecular Weight</b>	88kDa

**Antigen Information**

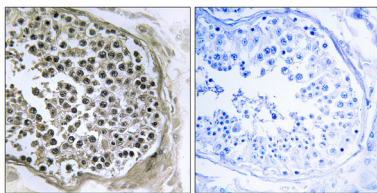
<b>Gene Name</b>	R3HCC1L R3HCC1L; C10orf28; GIDRP88; R3H and coiled-coil domain-containing protein 1-like;
<b>Alternative Names</b>	Growth inhibition and differentiation-related protein 88; Putative mitochondrial space protein 32.1
<b>Gene ID</b>	27291.0
<b>SwissProt ID</b>	Q7Z5L2
<b>Immunogen</b>	The antiserum was produced against synthesized peptide derived from human GIDRP88. AA range:721-770

## Background

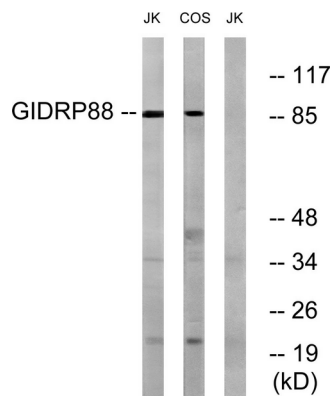
tissue specificity:Expressed in placenta.,tissue specificity:Expressed in placenta.,

## Research Area

## Image Data



Immunohistochemistry analysis of paraffin-embedded human testis tissue, using GIDRP88 Antibody. The picture on the right is blocked with the synthesized peptide.



Western blot analysis of lysates from Jurkat and COS cells, using GIDRP88 Antibody. The lane on the right is blocked with the synthesized peptide.