
Product Name: GHITM Rabbit Polyclonal Antibody**Catalog #: APRab11436**

For research use only.

Summary

Description	Rabbit polyclonal Antibody
Host	Rabbit
Application	WB,IHC,ICC/IF,ELISA
Reactivity	Human,Rat,Mouse
Conjugation	Unconjugated
Modification	Unmodified
Isotype	IgG
Clonality	Polyclonal
Form	Liquid
Concentration	1mg/ml
Storage	Aliquot and store at -20°C (valid for 12 months). Avoid freeze/thaw cycles.
Shipping	Ice bags
Buffer	Liquid in PBS containing 50% glycerol, 0.5% protective protein and 0.02% New type preservative N.
Purification	Affinity purification

Application

Dilution Ratio	WB 1:500-1:2000,IHC 1:100-1:300,ICC/IF 1:50-1:200,ELISA 1:5000-1:20000
Molecular Weight	37kDa

Antigen Information

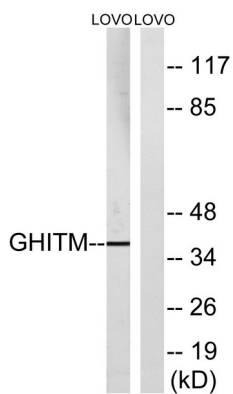
Gene Name	GHITM
Alternative Names	GHITM; DERP2; MICS1; TMBIM5; My021; Growth hormone-inducible transmembrane protein; Dermal papilla-derived protein 2; Mitochondrial morphology and cristae structure 1; MICS1; Transmembrane BAX inhibitor motif-containing protein 5
Gene ID	27069.0
SwissProt ID	Q9H3K2
Immunogen	The antiserum was produced against synthesized peptide derived from human GHITM. AA range:31-80

Background

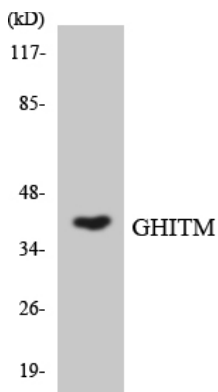
similarity:Belongs to the B11 family.,similarity:Belongs to the B11 family.,

Research Area

Image Data



Western blot analysis of lysates from LOVO cells, using GHITM Antibody. The lane on the right is blocked with the synthesized peptide.



Western blot analysis of the lysates from HepG2 cells using GHITM antibody.