

Product Name: GGH Rabbit Polyclonal Antibody**Catalog #: APRab11428**

For research use only.

Summary

Description	Rabbit polyclonal Antibody
Host	Rabbit
Application	WB,IHC,ICC/IF,ELISA
Reactivity	Human,Rat,Mouse
Conjugation	Unconjugated
Modification	Unmodified
Isotype	IgG
Clonality	Polyclonal
Form	Liquid
Concentration	1mg/ml
Storage	Aliquot and store at -20°C (valid for 12 months). Avoid freeze/thaw cycles.
Shipping	Ice bags
Buffer	Liquid in PBS containing 50% glycerol, 0.5% protective protein and 0.02% New type preservative N.
Purification	Affinity purification

Application

Dilution Ratio	WB 1:500-1:2000,IHC 1:100-1:300,ICC/IF 1:50-1:200,ELISA 1:5000-1:20000
Molecular Weight	36kDa

Antigen Information

Gene Name	GGH
Alternative Names	GGH; Gamma-glutamyl hydrolase; Conjugase; GH; Gamma-Glu-X carboxypeptidase
Gene ID	8836.0
SwissProt ID	Q92820
Immunogen	The antiserum was produced against synthesized peptide derived from human GGH. AA range:251-300

Background

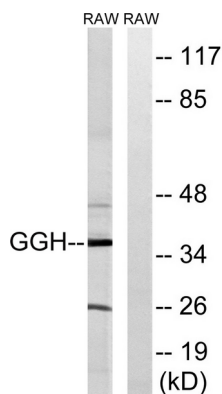
This gene catalyzes the hydrolysis of folylpoly-gamma-glutamates and antifolylpoly-gamma-glutamates by the removal of

gamma-linked polyglutamates and glutamate. [provided by RefSeq, Jul 2008],catalytic activity:Hydrolysis of a gamma-glutamyl bond.,function:Hydrolyzes the polyglutamate sidechains of pteroylpolyglutamates. Progressively removes gamma-glutamyl residues from pteroylpoly-gamma-glutamate to yield pteroyl-alpha-glutamate (folic acid) and free glutamate. May play an important role in the bioavailability of dietary pteroylpolyglutamates and in the metabolism of pteroylpolyglutamates and antifolates.,similarity:Belongs to the peptidase C26 family.,similarity:Contains 1 gamma-glutamyl hydrolase domain.,subcellular location:While its intracellular location is primarily the lysosome, most of the enzyme activity is secreted. Identified by mass spectrometry in melanosome fractions from stage I to stage IV.,

Research Area

Folate biosynthesis;

Image Data



Western blot analysis of lysates from RAW264.7 cells, using GGH Antibody. The lane on the right is blocked with the synthesized peptide.