

Product Name: GFR α -4 Rabbit Polyclonal Antibody**Catalog #: APRab11419**

For research use only.

Summary

Description	Rabbit polyclonal Antibody
Host	Rabbit
Application	WB,ELISA
Reactivity	Human,Rat,Mouse
Conjugation	Unconjugated
Modification	Unmodified
Isotype	IgG
Clonality	Polyclonal
Form	Liquid
Concentration	1mg/ml
Storage	Aliquot and store at -20°C (valid for 12 months). Avoid freeze/thaw cycles.
Shipping	Ice bags
Buffer	Liquid in PBS containing 50% glycerol, 0.5% protective protein and 0.02% New type preservative N.
Purification	Affinity purification

Application

Dilution Ratio	WB 1:500-1:2000,ELISA 1:5000-1:20000
Molecular Weight	30kDa

Antigen Information

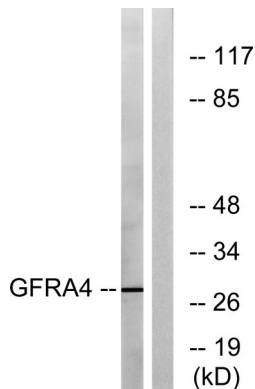
Gene Name	GFRA4
Alternative Names	GFRA4; GDNF family receptor alpha-4; GDNF receptor alpha-4; GDNFR-alpha-4; GFR-alpha-4; Persephin receptor
Gene ID	64096.0
SwissProt ID	Q9GZZ7
Immunogen	The antiserum was produced against synthesized peptide derived from human GFRA4. AA range:141-190

Background

The protein encoded by this gene is a member of the GDNF receptor family. It is a glycosylphosphatidylinositol(GPI)-linked cell surface receptor for persephin, and mediates activation of the RET tyrosine kinase receptor. This gene is a candidate gene for RET-associated diseases. Alternatively spliced transcript variants encoding different isoforms have been described for this gene. [provided by RefSeq, Jul 2008],alternative products:Additional isoforms seem to exist,function:Receptor for persephin. Mediates the GDNF-induced autophosphorylation and activation of the RET receptor. May be important in C-cell development and, in the postnatal development of the adrenal medulla.,similarity:Belongs to the GDNFR family.,tissue specificity:Predominantly expressed in the adult thyroid gland. Low levels also found in fetal adrenal and thyroid glands.,

Research Area

Image Data



Western blot analysis of lysates from HeLa cells, using GFRA4 Antibody. The lane on the right is blocked with the synthesized peptide.