

**Product Name: GFRP Rabbit Polyclonal Antibody****Catalog #: APRab11417**

For research use only.

**Summary**

<b>Description</b>	Rabbit polyclonal Antibody
<b>Host</b>	Rabbit
<b>Application</b>	IHC, ICC/IF, ELISA
<b>Reactivity</b>	Human, Rat
<b>Conjugation</b>	Unconjugated
<b>Modification</b>	Unmodified
<b>Isotype</b>	IgG
<b>Clonality</b>	Polyclonal
<b>Form</b>	Liquid
<b>Concentration</b>	1mg/ml
<b>Storage</b>	Aliquot and store at -20°C (valid for 12 months). Avoid freeze/thaw cycles.
<b>Shipping</b>	Ice bags
<b>Buffer</b>	Liquid in PBS containing 50% glycerol, 0.5% protective protein and 0.02% New type preservative N.
<b>Purification</b>	Affinity purification

**Application**

**Dilution Ratio** IHC 1:100-1:300, ICC/IF 1:50-1:200, ELISA 1:5000-1:20000

**Molecular Weight**

**Antigen Information**

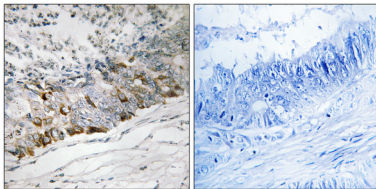
<b>Gene Name</b>	GCHFR
<b>Alternative Names</b>	GCHFR; GFRP; GTP cyclohydrolase 1 feedback regulatory protein; GFRP; GTP cyclohydrolase I feedback regulatory protein; p35
<b>Gene ID</b>	2644.0
<b>SwissProt ID</b>	P30047
<b>Immunogen</b>	The antiserum was produced against synthesized peptide derived from human GCHFR. AA range:31-80

**Background**

GTP cyclohydrolase I feedback regulatory protein binds to and mediates tetrahydrobiopterin inhibition of GTP cyclohydrolase I. The regulatory protein, GCHFR, consists of a homodimer. It is postulated that GCHFR may play a role in regulating phenylalanine metabolism in the liver and in the production of biogenic amine neurotransmitters and nitric oxide. [provided by RefSeq, Jul 2008],function:Mediates tetrahydrobiopterin inhibition of GTP cyclohydrolase 1. This inhibition is reversed by L-phenylalanine.,similarity:Belongs to the GFRP family.,subunit:Homopentamer. Forms a complex with GCH1 where a GCH1 homodecamer is sandwiched by two GFRP homopentamers (By similarity). Interacts with GCH1.,tissue specificity:In epidermis, expressed predominantly in basal undifferentiated keratinocytes and in some but not all melanocytes (at protein level),

## Research Area

## Image Data



Immunohistochemistry analysis of paraffin-embedded human colon carcinoma tissue, using GCHFR Antibody. The picture on the right is blocked with the synthesized peptide.