

Product Name: Gemin3 Rabbit Polyclonal Antibody**Catalog #: APRab11401**

For research use only.

Summary

Description	Rabbit polyclonal Antibody
Host	Rabbit
Application	WB,ELISA
Reactivity	Human,Mouse
Conjugation	Unconjugated
Modification	Unmodified
Isotype	IgG
Clonality	Polyclonal
Form	Liquid
Concentration	1mg/ml
Storage	Aliquot and store at -20°C (valid for 12 months). Avoid freeze/thaw cycles.
Shipping	Ice bags
Buffer	Liquid in PBS containing 50% glycerol, 0.5% protective protein and 0.02% New type preservative N.
Purification	Affinity purification

Application

Dilution Ratio	WB 1:500-1:2000,ELISA 1:20000-1:40000
Molecular Weight	90kDa

Antigen Information

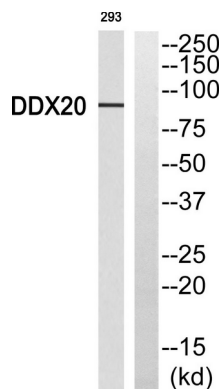
Gene Name	DDX20
Alternative Names	DDX20; DP103; GEMIN3; Probable ATP-dependent RNA helicase DDX20; Component of gems 3; DEAD box protein 20; DEAD box protein DP 103; Gemin-3
Gene ID	11218.0
SwissProt ID	Q9UHI6
Immunogen	The antiserum was produced against synthesized peptide derived from human DDX20. AA range:273-322

Background

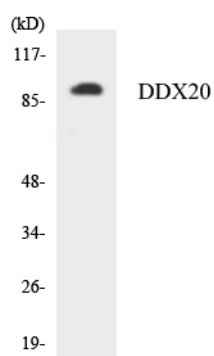
DEAD box proteins, characterized by the conserved motif Asp-Glu-Ala-Asp (DEAD), are putative RNA helicases. They are implicated in a number of cellular processes involving alteration of RNA secondary structure such as translation initiation, nuclear and mitochondrial splicing, and ribosome and spliceosome assembly. Based on their distribution patterns, some members of this family are believed to be involved in embryogenesis, spermatogenesis, and cellular growth and division. This gene encodes a DEAD box protein, which has an ATPase activity and is a component of the survival of motor neurons (SMN) complex. This protein interacts directly with SMN, the spinal muscular atrophy gene product, and may play a catalytic role in the function of the SMN complex on RNPs. [provided by RefSeq, Jul 2008],function:The SMN complex plays an essential role in spliceosomal snRNP assembly in the cytoplasm and is required for pre-mRNA splicing in the nucleus. It may also play a role in the metabolism of snoRNPs.,similarity:Belongs to the DEAD box helicase family.,similarity:Belongs to the DEAD box helicase family. DDX20 subfamily.,similarity:Contains 1 helicase ATP-binding domain.,similarity:Contains 1 helicase C-terminal domain.,subcellular location:Localized in subnuclear structures next to coiled bodies, called Gemini or Cajal bodies (Gems),subunit:Part of the core SMN complex that contains SMN1, SIP1/GEMIN2, DDX20/GEMIN3, GEMIN4, GEMIN5, GEMIN6, GEMIN7, GEMIN8 and STRAP/UNRIP. Interacts directly with SMN1 and with several spliceosomal snRNP core Sm proteins, including SNUPN, SNRPB, SNRPD2 and SNRPD3. Interacts with PPP4R2. Interacts with EBV EBNA2 and EBNA3C.,tissue specificity:Ubiquitous.,

Research Area

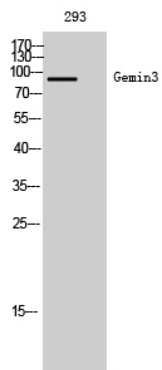
Image Data



Western blot analysis of DDX20 Antibody. The lane on the right is blocked with the DDX20 peptide.



Western blot analysis of the lysates from K562 cells using DDX20 antibody.



Western Blot analysis of 293 cells using Gemin3 Polyclonal Antibody