

---

**Product Name: GDF-3 Rabbit Polyclonal Antibody****Catalog #: APRab11384**

For research use only.

**Summary**

<b>Description</b>	Rabbit polyclonal Antibody
<b>Host</b>	Rabbit
<b>Application</b>	WB,ELISA
<b>Reactivity</b>	Human,Rat,Mouse
<b>Conjugation</b>	Unconjugated
<b>Modification</b>	Unmodified
<b>Isotype</b>	IgG
<b>Clonality</b>	Polyclonal
<b>Form</b>	Liquid
<b>Concentration</b>	1mg/ml
<b>Storage</b>	Aliquot and store at -20°C (valid for 12 months). Avoid freeze/thaw cycles.
<b>Shipping</b>	Ice bags
<b>Buffer</b>	Liquid in PBS containing 50% glycerol, 0.5% protective protein and 0.02% New type preservative N.
<b>Purification</b>	Affinity purification

**Application**

<b>Dilution Ratio</b>	WB 1:500-1:2000,ELISA 1:5000-1:20000
<b>Molecular Weight</b>	41kDa

**Antigen Information**

<b>Gene Name</b>	GDF3
<b>Alternative Names</b>	GDF3; Growth/differentiation factor 3; GDF-3
<b>Gene ID</b>	9573.0
<b>SwissProt ID</b>	Q9NR23
<b>Immunogen</b>	Synthesized peptide derived from Growth/differentiation factor 3 at AA range: 311-360

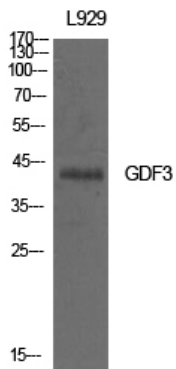
**Background**

This gene encodes a secreted ligand of the TGF-beta (transforming growth factor-beta) superfamily of proteins. Ligands of this family bind various TGF-beta receptors leading to recruitment and activation of SMAD family transcription factors that regulate

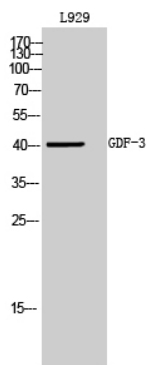
gene expression. The encoded preproprotein is proteolytically processed to generate each subunit of the disulfide-linked homodimer. This protein plays a role ocular and skeletal development. Mutations in this gene are associated with microphthalmia, coloboma, and skeletal abnormalities in human patients. [provided by RefSeq, Aug 2016],online information:GDF3 entry,similarity:Belongs to the TGF-beta family.,subunit:Homodimer or heterodimer (Potential). But, in contrast to other members of this family, cannot be disulfide-linked.,

## Research Area

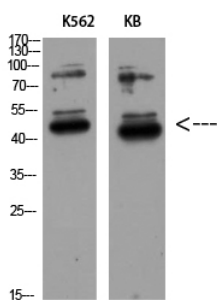
## Image Data



Western Blot analysis of L929 cells using GDF-3 Polyclonal Antibody. Antibody was diluted at 1:500. Secondary antibody was diluted at 1:20000



Western Blot analysis of L929 cells using GDF-3 Polyclonal Antibody diluted at 1: 500. Secondary antibody was diluted at 1:20000



Western Blot analysis of K562 KB using GDF-3 Polyclonal Antibody diluted at 1:500. Secondary antibody was diluted at 1:20000