
Product Name: GDF-15 Rabbit Polyclonal Antibody**Catalog #: APRab11382**

For research use only.

Summary

Description	Rabbit polyclonal Antibody
Host	Rabbit
Application	WB,ELISA
Reactivity	Human,Rat,Mouse
Conjugation	Unconjugated
Modification	Unmodified
Isotype	IgG
Clonality	Polyclonal
Form	Liquid
Concentration	1mg/ml
Storage	Aliquot and store at -20°C (valid for 12 months). Avoid freeze/thaw cycles.
Shipping	Ice bags
Buffer	Liquid in PBS containing 50% glycerol, 0.5% protective protein and 0.02% New type preservative N.
Purification	Affinity purification

Application

Dilution Ratio	WB 1:500-1:2000,ELISA 1:20000-1:40000
Molecular Weight	37kDa

Antigen Information

Gene Name	GDF15 GDF15; MIC1; PDF; PLAB; PTGFB; Growth/differentiation factor 15; GDF-15; Macrophage
Alternative Names	inhibitory cytokine 1; MIC-1; NSAID-activated gene 1 protein; NAG-1; NSAID-regulated gene 1 protein; NRG-1; Placental TGF-beta; Placental bone morphogenetic
Gene ID	9518.0
SwissProt ID	Q99988
Immunogen	The antiserum was produced against synthesized peptide derived from human GDF15. AA range:31-80

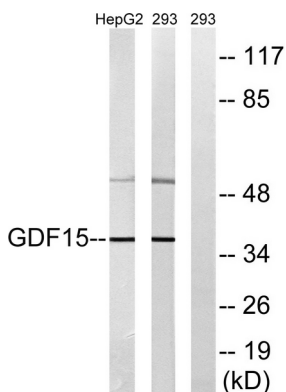
Background

growth differentiation factor 15(GDF15) Homo sapiens This gene encodes a secreted ligand of the TGF-beta (transforming growth factor-beta) superfamily of proteins. Ligands of this family bind various TGF-beta receptors leading to recruitment and activation of SMAD family transcription factors that regulate gene expression. The encoded preproprotein is proteolytically processed to generate each subunit of the disulfide-linked homodimer. The protein is expressed in a broad range of cell types, acts as a pleiotropic cytokine and is involved in the stress response program of cells after cellular injury. Increased protein levels are associated with disease states such as tissue hypoxia, inflammation, acute injury and oxidative stress. [provided by RefSeq, Aug 2016],similarity:Belongs to the TGF-beta family.,subunit:Homodimer; disulfide-linked.,tissue specificity:Highly expressed in placenta, with lower levels in prostate and colon and some expression in kidney.,

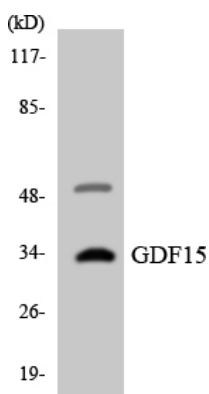
Research Area

Cell Biology

Image Data



Western blot analysis of lysates from 293 and HepG2 cells, using GDF15 Antibody. The lane on the right is blocked with the synthesized peptide.



Western blot analysis of the lysates from HT-29 cells using GDF15 antibody.



Western Blot analysis of various cells using GDF-15 Polyclonal Antibody diluted at 1 : 1000