

## Summary

<b>Production Name</b>	GCS- $\alpha$ -1 Rabbit Polyclonal Antibody
<b>Description</b>	Rabbit Polyclonal Antibody
<b>Host</b>	Rabbit
<b>Application</b>	WB,CoIP,IHC-P,IF-P,IF-F,ICC/IF,ELISA
<b>Reactivity</b>	Human,Mouse,Rat

## Performance

<b>Conjugation</b>	Unconjugated
<b>Modification</b>	Unmodified
<b>Isotype</b>	IgG
<b>Clonality</b>	Polyclonal
<b>Form</b>	Liquid
<b>Storage</b>	Store at 4°C short term. Aliquot and store at -20°C long term. Avoid freeze/thaw cycles.
<b>Buffer</b>	Liquid in PBS containing 50% glycerol, 0.5% protective protein and 0.02% New type preservative N.
<b>Purification</b>	Affinity purification

## Immunogen

<b>Gene Name</b>	GUCY1A3
<b>Alternative Names</b>	GUCY1A3; GUC1A3; GUCSA3; GUCY1A1; Guanylate cyclase soluble subunit alpha-3; GCS-alpha-3; GCS-alpha-1; Soluble guanylate cyclase large subunit
<b>Gene ID</b>	2982.0
<b>SwissProt ID</b>	Q02108.The antiserum was produced against synthesized peptide derived from human GCS-alpha-1. AA range:374-423

## Application

<b>Dilution Ratio</b>	WB 1:500-1:2000, IHC-P 1:100-1:300, ELISA 1:40000, IF-P/IF-F/ICC/IF 1:50-200
<b>Molecular Weight</b>	77kDa

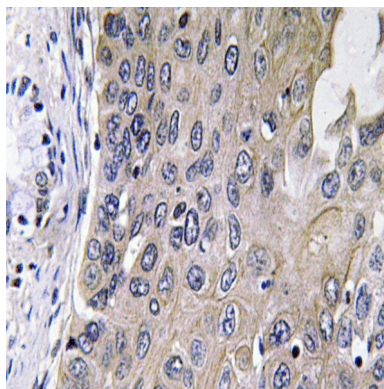
## Background

Soluble guanylate cyclases are heterodimeric proteins that catalyze the conversion of GTP to 3',5'-cyclic GMP and pyrophosphate. The protein encoded by this gene is an alpha subunit of this complex and it interacts with a beta subunit to form the guanylate cyclase enzyme, which is activated by nitric oxide. Several transcript variants encoding a few different isoforms have been found for this gene. [provided by RefSeq, Jan 2012], catalytic activity: GTP = 3',5'-cyclic GMP + diphosphate., enzyme regulation: Activated by nitric oxide in the presence of magnesium or manganese ions., miscellaneous: There are two types of guanylate cyclases: soluble forms and membrane-associated receptor forms., similarity: Belongs to the adenylyl cyclase class-4/guanylyl cyclase family., similarity: Contains 1 guanylate cyclase domain., subunit: Heterodimer of an alpha and a beta chain.,

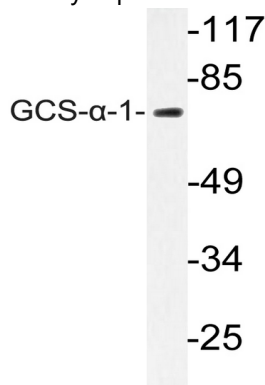
## Research Area

Purine metabolism; Vascular smooth muscle contraction; Gap junction; Long-term depression;

## Image Data



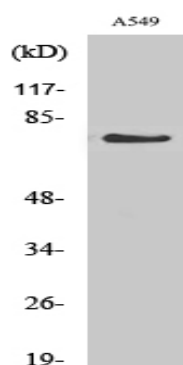
Immunohistochemistry analysis of GCS- $\alpha$ -1 antibody in paraffin-embedded human lung carcinoma tissue.



Western blot analysis of lysate from A549 cells, using GCS- $\alpha$ -1 antibody.

**Product Name: GCS- $\alpha$ -1 Rabbit Polyclonal Antibody**  
**Catalog #: APRab11374**

---



Western Blot analysis of various cells using GCS- $\alpha$ -1 Polyclonal Antibody

### **Note**

For research use only.