

Product Name: GCSm- γ Rabbit Polyclonal Antibody**Catalog #: APRab11373**

For research use only.

Summary

Description	Rabbit polyclonal Antibody
Host	Rabbit
Application	WB,IHC,ICC/IF,ELISA
Reactivity	Human,Mouse,Rat,Monkey
Conjugation	Unconjugated
Modification	Unmodified
Isotype	IgG
Clonality	Polyclonal
Form	Liquid
Concentration	1mg/ml
Storage	Aliquot and store at -20°C (valid for 12 months). Avoid freeze/thaw cycles.
Shipping	Ice bags
Buffer	Liquid in PBS containing 50% glycerol, 0.5% protective protein and 0.02% New type preservative N.
Purification	Affinity purification

Application

Dilution Ratio	WB 1:500-1:2000,IHC 1:100-1:300,ICC/IF 1:50-1:200,ELISA 1:5000-1:20000
Molecular Weight	31kDa

Antigen Information

Gene Name	GCLM GCLM; GLCLR; Glutamate--cysteine ligase regulatory subunit; GCS light chain; Gamma-ECS
Alternative Names	regulatory subunit; Gamma-glutamylcysteine synthetase regulatory subunit; Glutamate--cysteine ligase modifier subunit
Gene ID	2730.0
SwissProt ID	P48507
Immunogen	The antiserum was produced against synthesized peptide derived from human GCSm-gamma. AA range:42-91

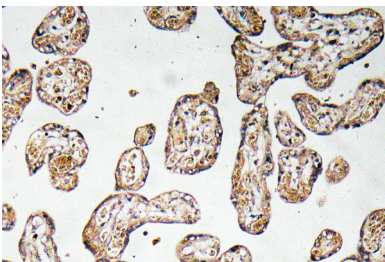
Background

Glutamate-cysteine ligase, also known as gamma-glutamylcysteine synthetase, is the first rate limiting enzyme of glutathione synthesis. The enzyme consists of two subunits, a heavy catalytic subunit and a light regulatory subunit. Gamma glutamylcysteine synthetase deficiency has been implicated in some forms of hemolytic anemia. Alternative splicing results in multiple transcript variants encoding different isoforms. [provided by RefSeq, Apr 2015], pathway: Sulfur metabolism; glutathione biosynthesis; glutathione from L-cysteine and L-glutamate: step 1/2., similarity: Belongs to the aldo/keto reductase family. Glutamate--cysteine ligase light chain subfamily., subunit: Heterodimer of a catalytic heavy chain and a regulatory light chain., tissue specificity: In all tissues examined. Highest levels in skeletal muscle.,

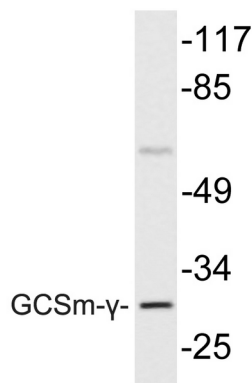
Research Area

Glutathione metabolism;

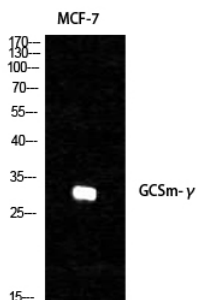
Image Data



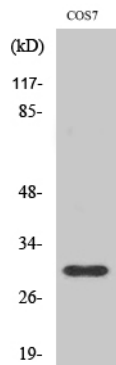
Immunohistochemistry analysis of GCSm- γ antibody in paraffin-embedded human prostate carcinoma tissue.



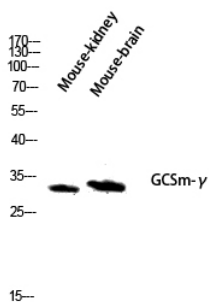
Western blot analysis of lysate from COS7 cells, using GCSm- γ antibody.



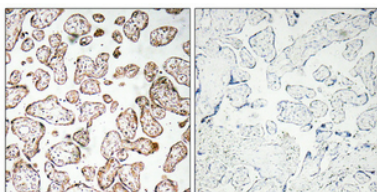
Western Blot analysis of various cells using GCSm- γ Polyclonal Antibody diluted at 1 : 1000



Western Blot analysis of COS7 cells using GCSm- γ Polyclonal Antibody diluted at 1:1000



Western blot analysis of Mouse-kidney mouse-brain lysis using GCSm- γ antibody. Antibody was diluted at 1:1000



Immunohistochemical analysis of paraffin-embedded Human placenta. Antibody was diluted at 1:100 (4 $^{\circ}$, overnight). High-pressure and temperature Tris-EDTA, pH 8.0 was used for antigen retrieval. Negative control (right) obtained from antibody was pre-absorbed by immunogen peptide.