

---

**Product Name: GCP5 Rabbit Polyclonal Antibody****Catalog #: APRab11367**

For research use only.

**Summary**

<b>Description</b>	Rabbit polyclonal Antibody
<b>Host</b>	Rabbit
<b>Application</b>	WB,IHC,ICC/IF,ELISA
<b>Reactivity</b>	Human,Mouse,Rat
<b>Conjugation</b>	Unconjugated
<b>Modification</b>	Unmodified
<b>Isotype</b>	IgG
<b>Clonality</b>	Polyclonal
<b>Form</b>	Liquid
<b>Concentration</b>	1mg/ml
<b>Storage</b>	Aliquot and store at -20°C (valid for 12 months). Avoid freeze/thaw cycles.
<b>Shipping</b>	Ice bags
<b>Buffer</b>	Liquid in PBS containing 50% glycerol, 0.5% protective protein and 0.02% New type preservative N.
<b>Purification</b>	Affinity purification

**Application**

<b>Dilution Ratio</b>	WB 1:500-1:2000,IHC 1:100-1:300,ICC/IF 1:50-1:200,ELISA 1:10000-1:20000
<b>Molecular Weight</b>	118kDa

**Antigen Information**

<b>Gene Name</b>	TUBGCP5
<b>Alternative Names</b>	TUBGCP5; GCP5; KIAA1899; Gamma-tubulin complex component 5; GCP-5
<b>Gene ID</b>	114791.0
<b>SwissProt ID</b>	Q96RT8
<b>Immunogen</b>	The antiserum was produced against synthesized peptide derived from human TUBGCP5. AA range:741-790

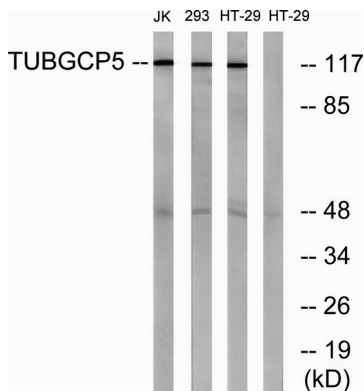
**Background**

function:Gamma-tubulin complex is necessary for microtubule nucleation at the centrosome.,similarity:Belongs to the GCP

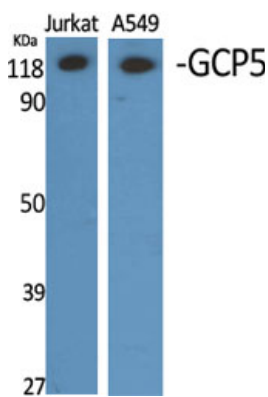
family,subunit:Gamma-tubulin complex is composed of gamma-tubulin, GCP2, GCP3, GCP4, GCP5 and GCP6,tissue specificity:Widely expressed, with highest levels in heart and skeletal muscle and moderate levels in brain.,function:Gamma-tubulin complex is necessary for microtubule nucleation at the centrosome.,similarity:Belongs to the GCP family,subunit:Gamma-tubulin complex is composed of gamma-tubulin, GCP2, GCP3, GCP4, GCP5 and GCP6,tissue specificity:Widely expressed, with highest levels in heart and skeletal muscle and moderate levels in brain.,

## Research Area

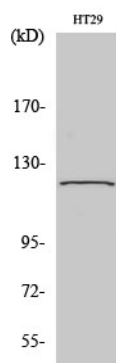
## Image Data



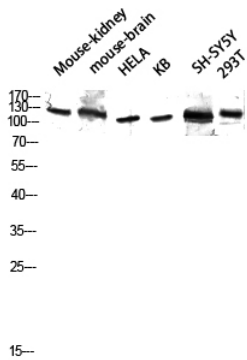
Western blot analysis of lysates from HT-29, Jurkat, and 293 cells, using TUBGCP5 Antibody. The lane on the right is blocked with the synthesized peptide.



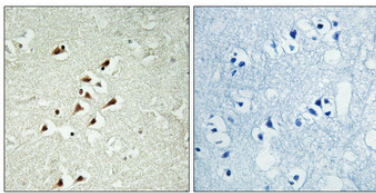
Western Blot analysis of various cells using GCP5 Polyclonal Antibody diluted at 1:2000



Western Blot analysis of 293 cells using GCP5 Polyclonal Antibody diluted at 1:2000



Western blot analysis of Mouse-kidney mouse-brain HELA KB SH-SY5Y 293T lysis using GCP5 antibody. Antibody was diluted at 1:2000



Immunohistochemical analysis of paraffin-embedded Human brain. Antibody was diluted at 1:100 (4°, overnight) . High-pressure and temperature Tris-EDTA, pH8.0 was used for antigen retrieval. Negative control (right) obtained from antibody was pre-absorbed by immunogen peptide.