
Product Name: GCNT7 Rabbit Polyclonal Antibody**Catalog #: APRab11363**

For research use only.

Summary

Description	Rabbit polyclonal Antibody
Host	Rabbit
Application	WB,IHC,ICC/IF,ELISA
Reactivity	Human,Rat,Mouse
Conjugation	Unconjugated
Modification	Unmodified
Isotype	IgG
Clonality	Polyclonal
Form	Liquid
Concentration	1mg/ml
Storage	Aliquot and store at -20°C (valid for 12 months). Avoid freeze/thaw cycles.
Shipping	Ice bags
Buffer	Liquid in PBS containing 50% glycerol, 0.5% protective protein and 0.02% New type preservative N.
Purification	Affinity purification

Application

Dilution Ratio	WB 1:500-1:2000,IHC 1:100-1:300,ICC/IF 1:200-1:1000,ELISA 1:20000-1:40000
Molecular Weight	49kDa

Antigen Information

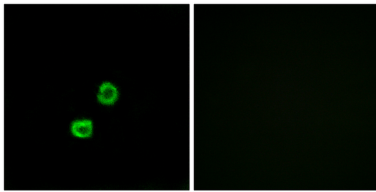
Gene Name	GCNT7
Alternative Names	GCNT7; C20orf105; Beta-1; 3-galactosyl-O-glycosyl-glycoprotein beta-1,6-N-acetylglucosaminyltransferase 7
Gene ID	140687.0
SwissProt ID	Q6ZNI0
Immunogen	The antiserum was produced against synthesized peptide derived from human GCNT7. AA range:311-360

Background

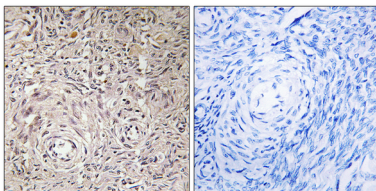
function:Glycosyltransferase.,pathway:Protein modification; protein glycosylation.,sequence caution:Translated as Gln.,similarity:Belongs to the glycosyltransferase 14 family.,function:Glycosyltransferase.,pathway:Protein modification; protein glycosylation.,sequence caution:Translated as Gln.,similarity:Belongs to the glycosyltransferase 14 family.,

Research Area

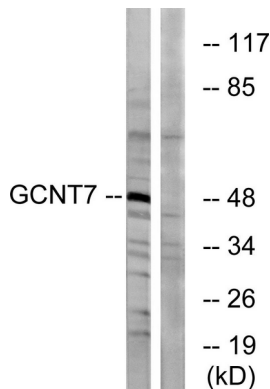
Image Data



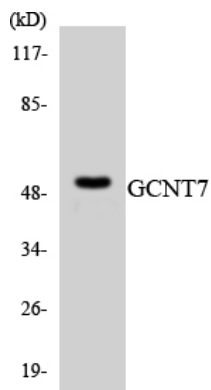
Immunofluorescence analysis of MCF7 cells, using GCNT7 Antibody. The picture on the right is blocked with the synthesized peptide.



Immunohistochemistry analysis of paraffin-embedded human ovary tissue, using GCNT7 Antibody. The picture on the right is blocked with the synthesized peptide.



Western blot analysis of lysates from K562 cells, using GCNT7 Antibody. The lane on the right is blocked with the synthesized peptide.



Western blot analysis of the lysates from HT-29 cells using GCNT7 antibody.