
Product Name: GCKR Rabbit Polyclonal Antibody**Catalog #: APRab11350**

For research use only.

Summary

Description	Rabbit polyclonal Antibody
Host	Rabbit
Application	WB,ELISA
Reactivity	Human,Mouse,Rat
Conjugation	Unconjugated
Modification	Unmodified
Isotype	IgG
Clonality	Polyclonal
Form	Liquid
Concentration	1mg/ml
Storage	Aliquot and store at -20°C (valid for 12 months). Avoid freeze/thaw cycles.
Shipping	Ice bags
Buffer	Liquid in PBS containing 50% glycerol, 0.5% protective protein and 0.02% New type preservative N.
Purification	Affinity purification

Application

Dilution Ratio	WB 1:500-1:2000,ELISA 1:20000-1:40000
Molecular Weight	68kDa

Antigen Information

Gene Name	GCKR
Alternative Names	GCKR; Glucokinase regulatory protein; Glucokinase regulator
Gene ID	2646.0
SwissProt ID	Q14397
Immunogen	The antiserum was produced against synthesized peptide derived from human Glucokinase Regulator. AA range:211-260

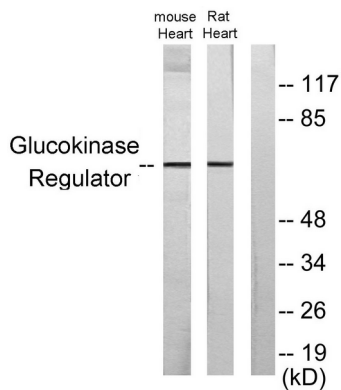
Background

This gene encodes a protein belonging to the GCKR subfamily of the SIS (Sugar ISomerase) family of proteins. The gene

product is a regulatory protein that inhibits glucokinase in liver and pancreatic islet cells by binding non-covalently to form an inactive complex with the enzyme. This gene is considered a susceptibility gene candidate for a form of maturity-onset diabetes of the young (MODY). [provided by RefSeq, Jul 2008],function:Inhibits glucokinase by forming an inactive complex with this enzyme.,similarity:Belongs to the GCKR family.,similarity:Contains 1 SIS domain.,tissue specificity:Found in liver and pancreas. Not detected in muscle, brain, heart, thymus, intestine, uterus, adipose tissue, kidney, adrenal, lung or spleen.,

Research Area

Image Data



Western blot analysis of lysates from mouse heart and rat heart cells, using Glucokinase Regulator Antibody. The lane on the right is blocked with the synthesized peptide.