

**Product Name: GBP1 Rabbit Polyclonal Antibody****Catalog #: APRab11328**

For research use only.

**Summary**

<b>Description</b>	Rabbit polyclonal Antibody
<b>Host</b>	Rabbit
<b>Application</b>	WB,ICC/IF,ELISA
<b>Reactivity</b>	Human,Rat,Mouse
<b>Conjugation</b>	Unconjugated
<b>Modification</b>	Unmodified
<b>Isotype</b>	IgG
<b>Clonality</b>	Polyclonal
<b>Form</b>	Liquid
<b>Concentration</b>	1mg/ml
<b>Storage</b>	Aliquot and store at -20°C (valid for 12 months). Avoid freeze/thaw cycles.
<b>Shipping</b>	Ice bags
<b>Buffer</b>	Liquid in PBS containing 50% glycerol, 0.5% protective protein and 0.02% New type preservative N.
<b>Purification</b>	Affinity purification

**Application**

<b>Dilution Ratio</b>	WB 1:500-1:2000,ICC/IF 1:200-1:1000,ELISA 1:20000-1:40000
<b>Molecular Weight</b>	68kDa

**Antigen Information**

<b>Gene Name</b>	GBP1
<b>Alternative Names</b>	GBP1; Interferon-induced guanylate-binding protein 1; GTP-binding protein 1; GBP-1; HuGBP-1; Guanine nucleotide-binding protein 1
<b>Gene ID</b>	2633.0
<b>SwissProt ID</b>	P32455
<b>Immunogen</b>	The antiserum was produced against synthesized peptide derived from human GBP1. AA range:71-120

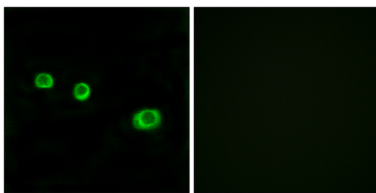
**Background**

Guanylate binding protein expression is induced by interferon. Guanylate binding proteins are characterized by their ability to specifically bind guanine nucleotides (GMP, GDP, and GTP) and are distinguished from the GTP-binding proteins by the presence of 2 binding motifs rather than 3. [provided by RefSeq, Jul 2008],function: Binds GTP, GDP and GMP.,induction: By interferon gamma during macrophage activation.,similarity: Belongs to the GBP family.,

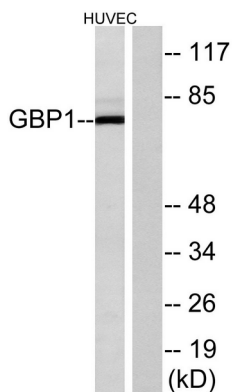
## Research Area

Immunology

## Image Data



Immunofluorescence analysis of MCF7 cells, using GBP1 Antibody. The picture on the right is blocked with the synthesized peptide.



Western blot analysis of lysates from HUVEC cells, using GBP1 Antibody. The lane on the right is blocked with the synthesized peptide.