

Product Name: GBDR1 Rabbit Polyclonal Antibody**Catalog #: APRab11324**

For research use only.

Summary

Description	Rabbit polyclonal Antibody
Host	Rabbit
Application	WB,IHC,ICC/IF,ELISA
Reactivity	Human,Rat,Mouse
Conjugation	Unconjugated
Modification	Unmodified
Isotype	IgG
Clonality	Polyclonal
Form	Liquid
Concentration	1mg/ml
Storage	Aliquot and store at -20°C (valid for 12 months). Avoid freeze/thaw cycles.
Shipping	Ice bags
Buffer	Liquid in PBS containing 50% glycerol, 0.5% protective protein and 0.02% New type preservative N.
Purification	Affinity purification

Application

Dilution Ratio	WB 1:500-1:2000,IHC 1:100-1:300,ICC/IF 1:50-1:200,ELISA 1:5000-1:20000
Molecular Weight	45kDa

Antigen Information

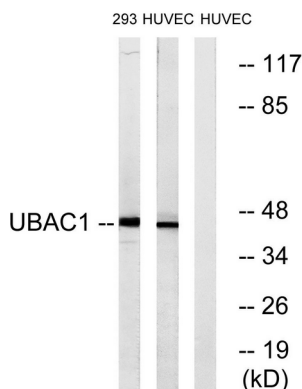
Gene Name	UBAC1
Alternative Names	UBAC1; GBDR1; KPC2; UBADC1; Ubiquitin-associated domain-containing protein 1; UBA domain-containing protein 1; E3 ubiquitin-protein ligase subunit KPC2; Glioblastoma cell differentiation-related protein 1; Kip1 ubiquitination-promoting com
Gene ID	10422.0
SwissProt ID	Q9BSL1
Immunogen	The antiserum was produced against synthesized peptide derived from human UBAC1. AA range:91-140

Background

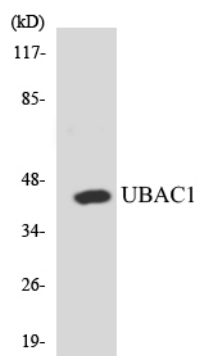
function:Non-catalytic subunit of the KPC complex that acts as E3 ubiquitin-protein ligase. Required for poly-ubiquitination and proteasome-mediated degradation of CDKN1B during G1 phase of the cell cycle.,pathway:Protein modification; protein ubiquitination.,similarity:Contains 1 STI1 domain.,similarity:Contains 1 ubiquitin-like domain.,similarity:Contains 2 UBA domains.,subunit:Component of the KPC complex composed of RNF123/KPC1 and UBAC1/KPC2. Interacts with RNF123 via its N-terminal domain. Interacts with the proteasome via its N-terminal domain.,tissue specificity:Ubiquitous.,function:Non-catalytic subunit of the KPC complex that acts as E3 ubiquitin-protein ligase. Required for poly-ubiquitination and proteasome-mediated degradation of CDKN1B during G1 phase of the cell cycle.,pathway:Protein modification; protein ubiquitination.,similarity:Contains 1 STI1 domain.,similarity:Contains 1 ubiquitin-like domain.,similarity:Contains 2 UBA domains.,subunit:Component of the KPC complex composed of RNF123/KPC1 and UBAC1/KPC2. Interacts with RNF123 via its N-terminal domain. Interacts with the proteasome via its N-terminal domain.,tissue specificity:Ubiquitous.,

Research Area

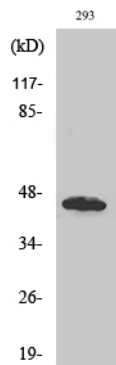
Image Data



Western blot analysis of lysates from 293 and HUVEC cells, using UBAC1 Antibody. The lane on the right is blocked with the synthesized peptide.



Western blot analysis of the lysates from HT-29 cells using UBAC1 antibody.



Western Blot analysis of various cells using GBDR1 Polyclonal Antibody diluted at 1 : 500