

Product Name: Gasdermin C Rabbit Polyclonal Antibody**Catalog #: APRab11304**

For research use only.

Summary

Description	Rabbit polyclonal Antibody
Host	Rabbit
Application	WB,ICC/IF,ELISA
Reactivity	Human,Rat,Mouse
Conjugation	Unconjugated
Modification	Unmodified
Isotype	IgG
Clonality	Polyclonal
Form	Liquid
Concentration	1mg/ml
Storage	Aliquot and store at -20°C (valid for 12 months). Avoid freeze/thaw cycles.
Shipping	Ice bags
Buffer	Liquid in PBS containing 50% glycerol, 0.5% protective protein and 0.02% New type preservative N.
Purification	Affinity purification

Application

Dilution Ratio	WB 1:500-1:2000,ICC/IF 1:100-1:300,ELISA 1:5000-1:20000
Molecular Weight	55kDa

Antigen Information

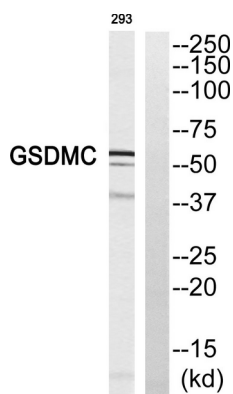
Gene Name	GSDMC
Alternative Names	GSDMC; MLZE; Gasdermin-C; Melanoma-derived leucine zipper-containing extranuclear factor
Gene ID	56169.0
SwissProt ID	Q9BYG8
Immunogen	The antiserum was produced against synthesized peptide derived from human GSDMC. AA range:109-158

Background

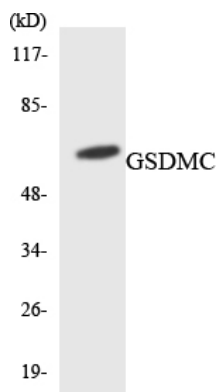
caution:Despite its name, it is unclear if this protein contains a functional leucine zipper.,similarity:Belongs to the gasdermin family.,tissue specificity:Expressed primarily in trachea and spleen.,caution:Despite its name, it is unclear if this protein contains a functional leucine zipper.,similarity:Belongs to the gasdermin family.,tissue specificity:Expressed primarily in trachea and spleen.,

Research Area

Image Data



Western blot analysis of GSDMC Antibody. The lane on the right is blocked with the GSDMC peptide.



Western blot analysis of the lysates from HepG2 cells using GSDMC antibody.



Western Blot analysis of various cells using Gasdermin C Polyclonal Antibody diluted at 1: 500