

Product Name: Gas6 Rabbit Polyclonal Antibody**Catalog #: APRab11302**

For research use only.

Summary

Description	Rabbit polyclonal Antibody
Host	Rabbit
Application	WB,IHC,ICC/IF,ELISA
Reactivity	Human,Rat,Mouse
Conjugation	Unconjugated
Modification	Unmodified
Isotype	IgG
Clonality	Polyclonal
Form	Liquid
Concentration	1mg/ml
Storage	Aliquot and store at -20°C (valid for 12 months). Avoid freeze/thaw cycles.
Shipping	Ice bags
Buffer	Liquid in PBS containing 50% glycerol, 0.5% protective protein and 0.02% New type preservative N.
Purification	Affinity purification

Application

Dilution Ratio	WB 1:500-1:2000,IHC 1:100-1:300,ICC/IF 1:50-1:200,ELISA 1:20000-1:40000
Molecular Weight	75kDa

Antigen Information

Gene Name	GAS6
Alternative Names	GAS6; AXLLG; Growth arrest-specific protein 6; GAS-6; AXL receptor tyrosine kinase ligand
Gene ID	2621.0
SwissProt ID	Q14393
Immunogen	The antiserum was produced against synthesized peptide derived from human GAS6. AA range:291-340

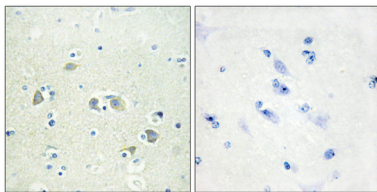
Background

This gene encodes a gamma-carboxyglutamic acid (Gla)-containing protein thought to be involved in the stimulation of cell

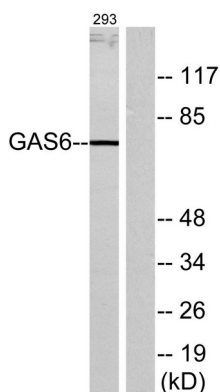
proliferation. This gene is frequently overexpressed in many cancers and has been implicated as an adverse prognostic marker. Elevated protein levels are additionally associated with a variety of disease states, including venous thromboembolic disease, systemic lupus erythematosus, chronic renal failure, and preeclampsia. [provided by RefSeq, Aug 2014],function:Ligand for tyrosine-protein kinase receptors AXL, TYRO3 and MER whose signaling is implicated in cell growth and survival, cell adhesion and cell migration. Plays a role in thrombosis by amplifying platelet aggregation and secretion in response to known agonists.,PTM:Gamma-carboxyglutamate residues are formed by vitamin K dependent carboxylation. These residues are essential for the binding of calcium.,PTM:Isoform 1 is proteolytically processed after secretion to yield a N-terminal 36 kDa protein and a C-terminal 50 kDa protein including the laminin G-like domains which activates AXL.,similarity:Contains 1 Gla (gamma-carboxy-glutamate) domain.,similarity:Contains 2 laminin G-like domains.,similarity:Contains 4 EGF-like domains.,subunit:Heterodimer and heterotetramer with AXL.,tissue specificity:Plasma. Isoform 1 and isoform 2 are widely expressed. Isoform 1 is the predominant form in spleen.,

Research Area

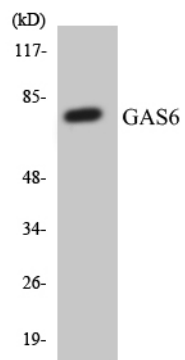
Image Data



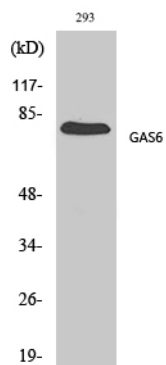
Immunohistochemistry analysis of paraffin-embedded human brain tissue, using GAS6 Antibody. The picture on the right is blocked with the synthesized peptide.



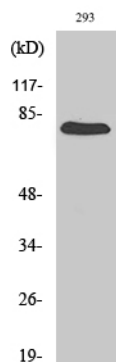
Western blot analysis of lysates from 293 cells, using GAS6 Antibody. The lane on the right is blocked with the synthesized peptide.



Western blot analysis of the lysates from HT-29 cells using GAS6 antibody.



Western Blot analysis of various cells using Gas6 Polyclonal Antibody diluted at 1: 500



Western Blot analysis of 293 cells using Gas6 Polyclonal Antibody diluted at 1: 500