

**Product Name: GANP Rabbit Polyclonal Antibody****Catalog #: APRab11291**

For research use only.

**Summary**

<b>Description</b>	Rabbit polyclonal Antibody
<b>Host</b>	Rabbit
<b>Application</b>	WB,IHC,ICC/IF,ELISA
<b>Reactivity</b>	Human,Mouse
<b>Conjugation</b>	Unconjugated
<b>Modification</b>	Unmodified
<b>Isotype</b>	IgG
<b>Clonality</b>	Polyclonal
<b>Form</b>	Liquid
<b>Concentration</b>	1mg/ml
<b>Storage</b>	Aliquot and store at -20°C (valid for 12 months). Avoid freeze/thaw cycles.
<b>Shipping</b>	Ice bags
<b>Buffer</b>	Liquid in PBS containing 50% glycerol, 0.5% protective protein and 0.02% New type preservative N.
<b>Purification</b>	Affinity purification

**Application**

<b>Dilution Ratio</b>	WB 1:500-1:2000,IHC 1:100-1:300,ICC/IF 1:50-1:200,ELISA 1:20000-1:40000
<b>Molecular Weight</b>	218kDa

**Antigen Information**

<b>Gene Name</b>	MCM3AP
<b>Alternative Names</b>	MCM3AP; GANP; KIAA0572; MAP80; 80 kDa MCM3-associated protein; Protein GANP
<b>Gene ID</b>	8888.0
<b>SwissProt ID</b>	O60318
<b>Immunogen</b>	The antiserum was produced against synthesized peptide derived from human GANP. AA range:1841-1890

**Background**

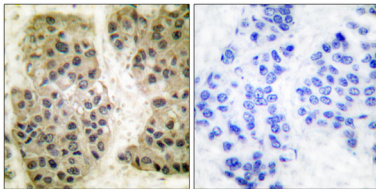
The minichromosome maintenance protein 3 (MCM3) is one of the MCM proteins essential for the initiation of DNA replication.

The protein encoded by this gene is a MCM3 binding protein. It was reported to have phosphorylation-dependent DNA-primase activity, which was up-regulated in antigen immunization induced germinal center. This protein was demonstrated to be an acetyltransferase that acetylates MCM3 and plays a role in DNA replication. The mutagenesis of a nuclear localization signal of MCM3 affects the binding of this protein with MCM3, suggesting that this protein may also facilitate MCM3 nuclear localization. This gene is expressed in the brain or in neuronal tissue. An allelic variant encoding amino acid Lys at 915, instead of conserved Glu, has been identified in patients with mild intellectual disability. [provided by RefSeq, Jan 2014],function:May be involved in the nuclear localization pathway of MCM3.,similarity:Belongs to the SAC3 family.,subunit:Interacts with MCM3.,

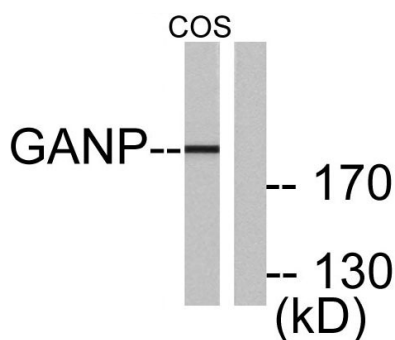
## Research Area

Protein\_Acetylation

## Image Data



Immunohistochemistry analysis of paraffin-embedded human breast carcinoma tissue, using GANP Antibody. The picture on the right is blocked with the synthesized peptide.



Western blot analysis of lysates from COS7 cells, using GANP Antibody. The lane on the right is blocked with the synthesized peptide.