
Product Name: GALR3 Rabbit Polyclonal Antibody**Catalog #: APRab11284**

For research use only.

Summary

Description	Rabbit polyclonal Antibody
Host	Rabbit
Application	WB,ICC/IF,ELISA
Reactivity	Human,Rat,Mouse
Conjugation	Unconjugated
Modification	Unmodified
Isotype	IgG
Clonality	Polyclonal
Form	Liquid
Concentration	1mg/ml
Storage	Aliquot and store at -20°C (valid for 12 months). Avoid freeze/thaw cycles.
Shipping	Ice bags
Buffer	Liquid in PBS containing 50% glycerol, 0.5% protective protein and 0.02% New type preservative N.
Purification	Affinity purification

Application

Dilution Ratio	WB 1:500-1:2000,ICC/IF 1:200-1:1000,ELISA 1:20000-1:40000
Molecular Weight	40kDa

Antigen Information

Gene Name	GALR3
Alternative Names	GALR3; GALNR3; Galanin receptor type 3; GAL3-R; GALR-3
Gene ID	8484.0
SwissProt ID	O60755
Immunogen	The antiserum was produced against synthesized peptide derived from human GALR3. AA range:291-340

Background

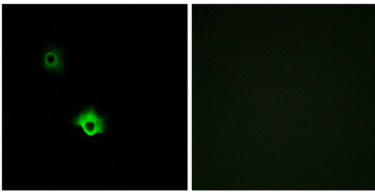
The neuropeptide galanin modulates a variety of physiologic processes including cognition/memory, sensory/pain processing,

hormone secretion, and feeding behavior. The human galanin receptors are G protein-coupled receptors that functionally couple to their intracellular effector through distinct signaling pathways. GALR3 is found in many tissues and may be expressed as 1.4-, 2.4-, and 5-kb transcripts [provided by RefSeq, Jul 2008],function:Receptor for the hormone galanin.,similarity:Belongs to the G-protein coupled receptor 1 family.,

Research Area

Neuroactive ligand-receptor interaction;

Image Data



Immunofluorescence analysis of A549 cells, using GALR3 Antibody. The picture on the right is blocked with the synthesized peptide.