
Product Name: GalNAc4ST-1 Rabbit Polyclonal Antibody**Catalog #: APRab11281**

For research use only.

Summary

Description	Rabbit polyclonal Antibody
Host	Rabbit
Application	WB,ELISA
Reactivity	Human,Mouse,Rat
Conjugation	Unconjugated
Modification	Unmodified
Isotype	IgG
Clonality	Polyclonal
Form	Liquid
Concentration	1mg/ml
Storage	Aliquot and store at -20°C (valid for 12 months). Avoid freeze/thaw cycles.
Shipping	Ice bags
Buffer	Liquid in PBS containing 50% glycerol, 0.5% protective protein and 0.02% New type preservative N.
Purification	Affinity purification

Application

Dilution Ratio	WB 1:500-1:2000,ELISA 1:20000-1:40000
Molecular Weight	40kDa

Antigen Information

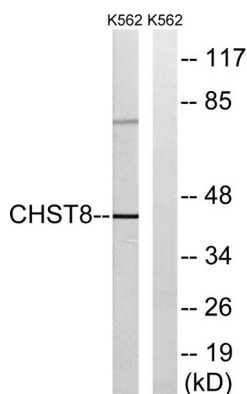
Gene Name	CHST8
Alternative Names	CHST8; Carbohydrate sulfotransferase 8; GalNAc-4-O-sulfotransferase 1; GalNAc-4-ST1; GalNAc4ST-1; N-acetylgalactosamine-4-O-sulfotransferase 1
Gene ID	64377.0
SwissProt ID	Q9H2A9
Immunogen	The antiserum was produced against synthesized peptide derived from human CHST8. AA range:341-390

Background

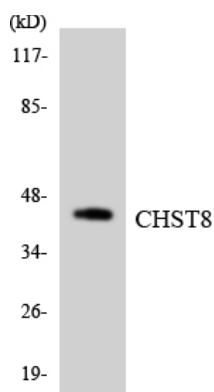
The protein encoded by this gene belongs to the sulfotransferase 2 family. It is predominantly expressed in the pituitary gland, and is localized to the golgi membrane. This protein catalyzes the transfer of sulfate to position 4 of non-reducing N-acetylgalactosamine (GalNAc) residues in both N-glycans and O-glycans. It is responsible for sulfation of GalNAc on luteinizing hormone (LH), which is required for production of the sex hormones. Mice lacking this enzyme, exhibit increased levels of circulating LH, and precocious sexual maturation of both male and female mice. Alternatively spliced transcript variants have been found for this gene. [provided by RefSeq, Aug 2011],caution:PubMed:10988300 reports the possible existence of a secreted isoform starting at Met-119. However, they do not provide any experimental evidence.,function:Catalyzes the transfer of sulfate to position 4 of non-reducing N-acetylgalactosamine (GalNAc) residues in both N-glycans and O-glycans. Required for biosynthesis of glycoprotein hormones lutropin and thyrotropin, by mediating sulfation of their carbohydrate structures. Only active against terminal GalNAcbeta1,GalNAcbeta. Not active toward chondroitin.,induction:Down-regulated (17-fold) in prion-infected cells.,similarity:Belongs to the sulfotransferase 2 family.,tissue specificity:Predominantly expressed in pituitary gland. In brain, it is expressed in pituitary gland, cerebellum, medulla oblongata, pons, thalamus and spinal cord. Expressed at lower level in lung, spleen, adrenal gland, placenta, prostate, testis, mammary gland and trachea.,

Research Area

Image Data



Western blot analysis of lysates from K562 cells, using CHST8 Antibody. The lane on the right is blocked with the synthesized peptide.



Western blot analysis of the lysates from HT-29 cells using CHST8 antibody.