
Product Name: Galectin-1 Rabbit Polyclonal Antibody**Catalog #: APRab11271**

For research use only.

Summary

Description	Rabbit polyclonal Antibody
Host	Rabbit
Application	WB,ELISA
Reactivity	Human,Rat,Deer
Conjugation	Unconjugated
Modification	Unmodified
Isotype	IgG
Clonality	Polyclonal
Form	Liquid
Concentration	1mg/ml
Storage	Aliquot and store at -20°C (valid for 12 months). Avoid freeze/thaw cycles.
Shipping	Ice bags
Buffer	Liquid in PBS containing 50% glycerol, 0.5% protective protein and 0.02% New type preservative N.
Purification	Affinity purification

Application

Dilution Ratio	WB 1:500-1:2000,ELISA 1:20000-1:40000
Molecular Weight	15kDa

Antigen Information

Gene Name	LGALS1
Alternative Names	LGALS1; Galectin-1; Gal-1; 14 kDa laminin-binding protein; HLBP14; 14 kDa lectin; Beta-galactoside-binding lectin L-14-I; Galaptin; HBL; HPL; Lactose-binding lectin 1; Lectin galactoside-binding soluble 1; Putative MAPK-activating protein P
Gene ID	3956.0
SwissProt ID	P09382
Immunogen	Synthesized peptide derived from Galectin-1 . at AA range: 10-90

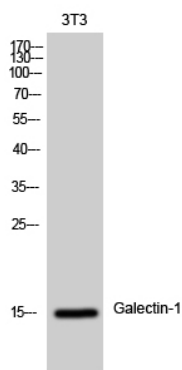
Background

The galectins are a family of beta-galactoside-binding proteins implicated in modulating cell-cell and cell-matrix interactions. This gene product may act as an autocrine negative growth factor that regulates cell proliferation. [provided by RefSeq, Jul 2008],function:May regulate apoptosis, cell proliferation and cell differentiation. Binds beta-galactoside and a wide array of complex carbohydrates. Inhibits CD45 protein phosphatase activity and therefore the dephosphorylation of Lyn kinase.,online information:Galectin-1,similarity:Contains 1 galectin domain.,subunit:Homodimer. Binds LGALS3BP. Interacts with CD2, CD3, CD4, CD7, CD43 and CD45.,tissue specificity:Cardiac, smooth, and skeletal muscle, neurons, thymus, kidney, placenta and hematopoietic cells.,

Research Area

Cell Biology

Image Data



Western Blot analysis of 3T3 cells using Galectin-1 Polyclonal Antibody diluted at 1: 500