
Product Name: GADD34 Rabbit Polyclonal Antibody**Catalog #: APRab11251**

For research use only.

Summary

Description	Rabbit polyclonal Antibody
Host	Rabbit
Application	WB,ELISA
Reactivity	Human,Rat,Mouse
Conjugation	Unconjugated
Modification	Unmodified
Isotype	IgG
Clonality	Polyclonal
Form	Liquid
Concentration	1mg/ml
Storage	Aliquot and store at -20°C (valid for 12 months). Avoid freeze/thaw cycles.
Shipping	Ice bags
Buffer	Liquid in PBS containing 50% glycerol, 0.5% protective protein and 0.02% New type preservative N.
Purification	Affinity purification

Application

Dilution Ratio	WB 1:500-1:2000,ELISA 1:10000-1:20000
Molecular Weight	73kDa

Antigen Information

Gene Name	PPP1R15A GADD34
Alternative Names	Protein phosphatase 1 regulatory subunit 15A (Growth arrest and DNA damage-inducible protein GADD34) (Myeloid differentiation primary response protein MyD116 homolog)
Gene ID	23645.0
SwissProt ID	O75807
Immunogen	Synthetic peptide from human protein at AA range: 430-490

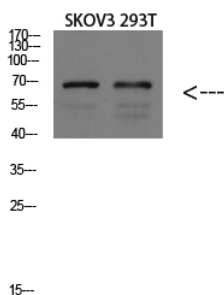
Background

This gene is a member of a group of genes whose transcript levels are increased following stressful growth arrest conditions

and treatment with DNA-damaging agents. The induction of this gene by ionizing radiation occurs in certain cell lines regardless of p53 status, and its protein response is correlated with apoptosis following ionizing radiation. [provided by RefSeq, Jul 2008],function:Recruits the serine/threonine-protein phosphatase PP1 to dephosphorylate the translation initiation factor eIF-2A/EIF2S1, thereby reversing the shut-off of protein synthesis initiated by stress-inducible kinases and facilitating recovery of cells from stress. Down-regulates the TGF-beta signaling pathway by promoting dephosphorylation of TGFB1 by PP1. May promote apoptosis by inducing TP53 phosphorylation on 'Ser-15',induction:By methyl methanesulfonate and ionizing irradiation. By IL24 in melanoma cells; which induces apoptosis.,miscellaneous:The phosphatase activity of the PPP1R15A-PP1 complex toward EIF2S1 is specifically inhibited by Salubrinal, a drug that protects cells from endoplasmic reticulum stress.,PTM:Phosphorylated on tyrosine by LYN; which impairs its antiproliferative activity.,similarity:Belongs to the PPP1R15 family.,subunit:Interacts with PCNA (By similarity). Interacts with LYN and MLL. Interacts with PP1, PPP1R1A and SMARCB1. Interacts with SMAD7. Interacts with BAG1.,

Research Area

Image Data



Western blot analysis of MOUSE-BRAIN lysate, antibody was diluted at 1000. Secondary antibody was diluted at 1:20000