

Product Name: GADD 45 γ Rabbit Polyclonal Antibody**Catalog #: APRab11250**

For research use only.

Summary

Description	Rabbit polyclonal Antibody
Host	Rabbit
Application	WB,IHC,ICC/IF,ELISA
Reactivity	Human,Mouse,Rat
Conjugation	Unconjugated
Modification	Unmodified
Isotype	IgG
Clonality	Polyclonal
Form	Liquid
Concentration	1mg/ml
Storage	Aliquot and store at -20°C (valid for 12 months). Avoid freeze/thaw cycles.
Shipping	Ice bags
Buffer	Liquid in PBS containing 50% glycerol, 0.5% protective protein and 0.02% New type preservative N.
Purification	Affinity purification

Application

Dilution Ratio	WB 1:500-1:2000,IHC 1:100-1:300,ICC/IF 1:200-1:1000,ELISA 1:5000-1:10000
Molecular Weight	19kDa

Antigen Information

Gene Name	GADD45G
Alternative Names	GADD45G; CR6; DDIT2; Growth arrest and DNA damage-inducible protein GADD45 gamma; Cytokine-responsive protein CR6; DNA damage-inducible transcript 2 protein; DDIT-2
Gene ID	10912.0
SwissProt ID	O95257
Immunogen	The antiserum was produced against synthesized peptide derived from human GA45G. AA range:101-150

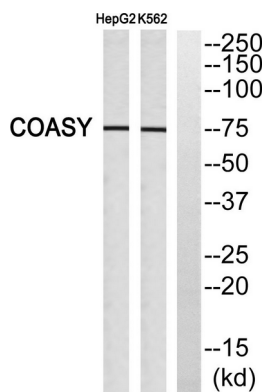
Background

This gene is a member of a group of genes whose transcript levels are increased following stressful growth arrest conditions and treatment with DNA-damaging agents. The protein encoded by this gene responds to environmental stresses by mediating activation of the p38/JNK pathway via MTK1/MEKK4 kinase. The GADD45G is highly expressed in placenta. [provided by RefSeq, Jul 2008],function:Involved in the regulation of growth and apoptosis. Mediates activation of stress-responsive MTK1/MEKK4 MAPKKK,.,similarity:Belongs to the GADD45 family,.,subunit:Interacts with GADD45GIP1.,

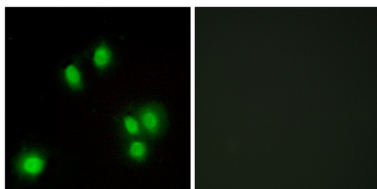
Research Area

MAPK_ERK_Growth;MAPK_G_Protein;Cell_Cycle_G1S;Cell_Cycle_G2M_DNA;p53;

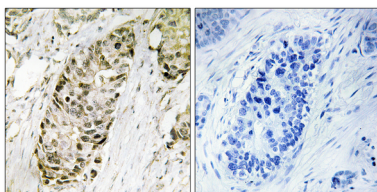
Image Data



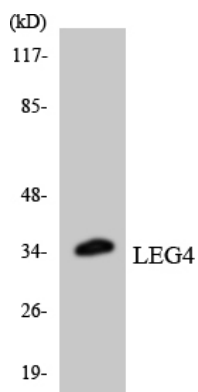
Western blot analysis of GA45G Antibody. The lane on the right is blocked with the GA45G peptide.



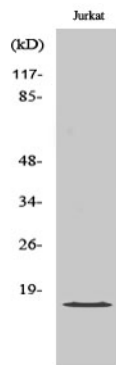
Immunofluorescence analysis of A549 cells, using GA45G Antibody. The picture on the right is blocked with the synthesized peptide.



Immunohistochemistry analysis of paraffin-embedded human lung carcinoma tissue, using GA45G Antibody. The picture on the right is blocked with the synthesized peptide.



Western blot analysis of the lysates from HeLa cells using LEG4 antibody.



Western Blot analysis of various cells using GADD 45 γ Polyclonal Antibody