
Product Name: GAD-65/67 Rabbit Polyclonal Antibody**Catalog #: APRab11247**

For research use only.

Summary

Description	Rabbit polyclonal Antibody
Host	Rabbit
Application	WB,IHC,ICC/IF,ELISA
Reactivity	Human,Mouse
Conjugation	Unconjugated
Modification	Unmodified
Isotype	IgG
Clonality	Polyclonal
Form	Liquid
Concentration	1mg/ml
Storage	Aliquot and store at -20°C (valid for 12 months). Avoid freeze/thaw cycles.
Shipping	Ice bags
Buffer	Liquid in PBS containing 50% glycerol, 0.5% protective protein and 0.02% New type preservative N.
Purification	Affinity purification

Application

Dilution Ratio	WB 1:500-1:2000,IHC 1:100-1:300,ICC/IF 1:200-1:1000,ELISA 1:5000-1:10000
Molecular Weight	65kDa

Antigen Information

Gene Name	GAD1/GAD2 GAD1; GAD; GAD67; Glutamate decarboxylase 1; 67 kDa glutamic acid decarboxylase; GAD-
Alternative Names	67; Glutamate decarboxylase 67 kDa isoform; GAD2; GAD65; Glutamate decarboxylase 2; 65 kDa glutamic acid decarboxylase; GAD-65; Glutamate decarboxylase 65
Gene ID	2571/2572
SwissProt ID	Q99259/Q05329
Immunogen	The antiserum was produced against synthesized peptide derived from human GAD1/2. AA range:545-594

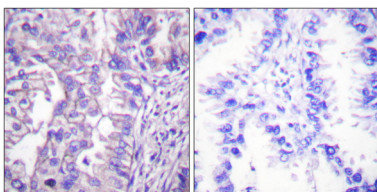
Background

glutamate decarboxylase 1(GAD1) Homo sapiens This gene encodes one of several forms of glutamic acid decarboxylase, identified as a major autoantigen in insulin-dependent diabetes. The enzyme encoded is responsible for catalyzing the production of gamma-aminobutyric acid from L-glutamic acid. A pathogenic role for this enzyme has been identified in the human pancreas since it has been identified as an autoantigen and an autoreactive T cell target in insulin-dependent diabetes. This gene may also play a role in the stiff man syndrome. Deficiency in this enzyme has been shown to lead to pyridoxine dependency with seizures. Alternative splicing of this gene results in two products, the predominant 67-kD form and a less-frequent 25-kD form. [provided by RefSeq, Jul 2008],catalytic activity:L-glutamate = 4-aminobutanoate + CO(2),cofactor:Pyridoxal phosphate,disease:Defects in GAD1 are the cause of autosomal recessive symmetric spastic cerebral palsy (SCP) [MIM:603513]. Cerebral palsy (CP) is an heterogeneous group of neurological disorders of movement and/or posture, with an estimated incidence of 1 in 250 to 1'000 live births, making CP one the commonest congenital disabilities. Non-progressive forms of symmetrical, spastic CP have been identified, which show a Mendelian autosomal recessive pattern of inheritance. Patients present developmental delay, mental retardation and sometimes epilepsy as part of the phenotype,function:Catalyzes the production of GABA,online information:Glutamate decarboxylase entry,similarity:Belongs to the group II decarboxylase family,subunit:Homodimer,tissue specificity:Isoform 3 is expressed in pancreatic islets, testis, adrenal cortex, and perhaps other endocrine tissues, but not in brain.,

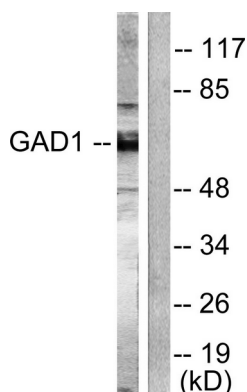
Research Area

Alanine; aspartate and glutamate metabolism;beta-Alanine metabolism;Taurine and hypotaurine metabolism;Butanoate metabolism;Type I diabetes mellitus;

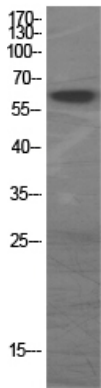
Image Data



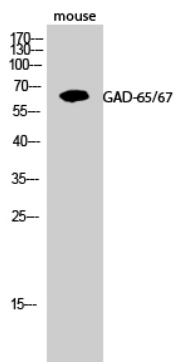
Immunohistochemistry analysis of paraffin-embedded human lung carcinoma tissue, using GAD1/2 Antibody. The picture on the right is blocked with the synthesized peptide.



Western blot analysis of lysates from mouse brain, using GAD1/2 Antibody. The lane on the right is blocked with the synthesized peptide.



Western Blot analysis of various cells using GAD-65/67 Polyclonal Antibody



Western Blot analysis of mouse cells using GAD-65/67 Polyclonal Antibody