

---

**Product Name: GABAA Rε Rabbit Polyclonal Antibody****Catalog #: APRab11240**

For research use only.

**Summary**

<b>Description</b>	Rabbit polyclonal Antibody
<b>Host</b>	Rabbit
<b>Application</b>	WB,ELISA
<b>Reactivity</b>	Human,Rat,Mouse
<b>Conjugation</b>	Unconjugated
<b>Modification</b>	Unmodified
<b>Isotype</b>	IgG
<b>Clonality</b>	Polyclonal
<b>Form</b>	Liquid
<b>Concentration</b>	1mg/ml
<b>Storage</b>	Aliquot and store at -20°C (valid for 12 months). Avoid freeze/thaw cycles.
<b>Shipping</b>	Ice bags
<b>Buffer</b>	Liquid in PBS containing 50% glycerol, 0.5% protective protein and 0.02% New type preservative N.
<b>Purification</b>	Affinity purification

**Application**

<b>Dilution Ratio</b>	WB 1:500-1:2000,ELISA 1:10000-1:20000
<b>Molecular Weight</b>	57kDa

**Antigen Information**

<b>Gene Name</b>	GABRE
<b>Alternative Names</b>	GABRE; Gamma-aminobutyric acid receptor subunit epsilon; GABA(A) receptor subunit epsilon
<b>Gene ID</b>	2564.0
<b>SwissProt ID</b>	P78334
<b>Immunogen</b>	Synthesized peptide derived from the Internal region of human GABAA range: Rε.

**Background**

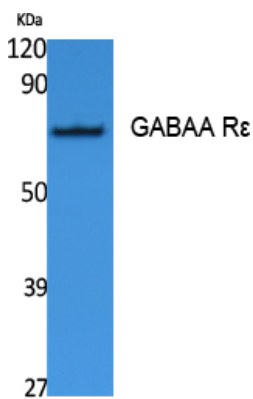
The product of this gene belongs to the ligand-gated ionic channel (TC 1.A.9) family. It encodes the gamma-aminobutyric acid

(GABA) A receptor which is a multisubunit chloride channel that mediates the fastest inhibitory synaptic transmission in the central nervous system. This gene encodes an epsilon subunit. It is mapped to chromosome Xq28 in a cluster comprised of genes encoding alpha 3, beta 4 and theta subunits of the same receptor. Alternatively spliced transcript variants have been identified, but only one is thought to encode a protein. [provided by RefSeq, Oct 2008],function:GABA, the major inhibitory neurotransmitter in the vertebrate brain, mediates neuronal inhibition by binding to the GABA/benzodiazepine receptor and opening an integral chloride channel.,similarity:Belongs to the ligand-gated ionic channel (TC 1.A.9) family.,subunit:Generally pentameric. Associates with alpha and beta subunits.,tissue specificity:Expressed in many tissues. Highest levels of expression in adult heart and placenta.,

## Research Area

Neuroactive ligand-receptor interaction;

## Image Data



Western Blot analysis of extracts from Jurkat cells, using GABAA Rε Polyclonal Antibody.. Secondary antibody was diluted at 1:20000