

**Product Name: GABAA Ry1 Rabbit Polyclonal Antibody****Catalog #: AP Rab11238**

For research use only.

**Summary**

<b>Description</b>	Rabbit polyclonal Antibody
<b>Host</b>	Rabbit
<b>Application</b>	WB,IHC,ICC/IF,ELISA
<b>Reactivity</b>	Human,Mouse,Rat
<b>Conjugation</b>	Unconjugated
<b>Modification</b>	Unmodified
<b>Isotype</b>	IgG
<b>Clonality</b>	Polyclonal
<b>Form</b>	Liquid
<b>Concentration</b>	1mg/ml
<b>Storage</b>	Aliquot and store at -20°C (valid for 12 months). Avoid freeze/thaw cycles.
<b>Shipping</b>	Ice bags
<b>Buffer</b>	Liquid in PBS containing 50% glycerol, 0.5% protective protein and 0.02% New type preservative N.
<b>Purification</b>	Affinity purification

**Application**

<b>Dilution Ratio</b>	WB 1:500-1:2000,IHC 1:100-1:300,ICC/IF 1:50-1:200,ELISA 1:10000-1:20000
<b>Molecular Weight</b>	54kDa

**Antigen Information**

<b>Gene Name</b>	GABRG1
<b>Alternative Names</b>	GABRG1; Gamma-aminobutyric acid receptor subunit gamma-1; GABA(A) receptor subunit gamma-1
<b>Gene ID</b>	2565.0
<b>SwissProt ID</b>	Q8N1C3
<b>Immunogen</b>	The antiserum was produced against synthesized peptide derived from human GABRG1. AA range:11-60

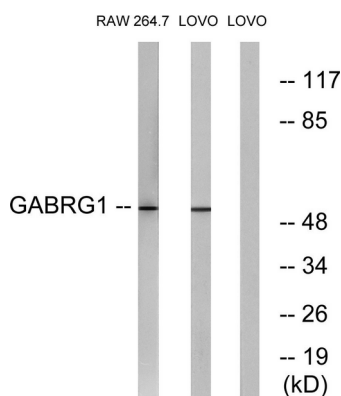
**Background**

The protein encoded by this gene belongs to the ligand-gated ionic channel family. It is an integral membrane protein and plays an important role in inhibiting neurotransmission by binding to the benzodiazepine receptor and opening an integral chloride channel. This gene is clustered with three other family members on chromosome 4. [provided by RefSeq, Jul 2008],function:GABA, the major inhibitory neurotransmitter in the vertebrate brain, mediates neuronal inhibition by binding to the GABA/benzodiazepine receptor and opening an integral chloride channel.,miscellaneous:This subunit carries the benzodiazepine binding site.,online information:Forbidden fruit - Issue 56 of March 2005,PTM:May be palmitoylated.,similarity:Belongs to the ligand-gated ionic channel (TC 1.A.9) family.,subunit:Generally pentameric. There are five types of GABA(A) receptor chains: alpha, beta, gamma, delta, and rho.,

## Research Area

Neuroactive ligand-receptor interaction;

## Image Data



Western blot analysis of lysates from LOVO and RAW264.7 cells, using GABRG1 Antibody. The lane on the right is blocked with the synthesized peptide.