
Product Name: GABAA R α 6 Rabbit Polyclonal Antibody**Catalog #: APRab11235**

For research use only.

Summary

Description	Rabbit polyclonal Antibody
Host	Rabbit
Application	WB,ELISA
Reactivity	Human,Mouse,Rat
Conjugation	Unconjugated
Modification	Unmodified
Isotype	IgG
Clonality	Polyclonal
Form	Liquid
Concentration	1mg/ml
Storage	Aliquot and store at -20°C (valid for 12 months). Avoid freeze/thaw cycles.
Shipping	Ice bags
Buffer	Liquid in PBS containing 50% glycerol, 0.5% protective protein and 0.02% New type preservative N.
Purification	Affinity purification

Application

Dilution Ratio	WB 1:500-1:2000,ELISA 1:20000-1:40000
Molecular Weight	51kDa

Antigen Information

Gene Name	GABRA6
Alternative Names	GABRA6; Gamma-aminobutyric acid receptor subunit alpha-6; GABA(A) receptor subunit alpha-6
Gene ID	2559.0
SwissProt ID	Q16445
Immunogen	The antiserum was produced against synthesized peptide derived from human GABRA6. AA range:61-110

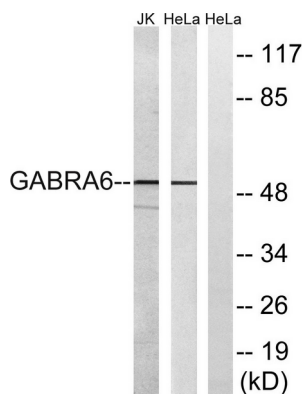
Background

GABA is the major inhibitory neurotransmitter in the mammalian brain where it acts at GABA-A receptors, which are ligand-gated chloride channels. Chloride conductance of these channels can be modulated by agents such as benzodiazepines that bind to the GABA-A receptor. At least 16 distinct subunits of GABA-A receptors have been identified. [provided by RefSeq, Jul 2008],function:GABA, the major inhibitory neurotransmitter in the vertebrate brain, mediates neuronal inhibition by binding to the GABA/benzodiazepine receptor and opening an integral chloride channel.,online information:Forbidden fruit - Issue 56 of March 2005,similarity:Belongs to the ligand-gated ionic channel (TC 1.A.9) family.,subunit:Binds UBQLN1 (By similarity). Generally pentameric. There are five types of GABA(A) receptor chains: alpha, beta, gamma, delta, and rho.,

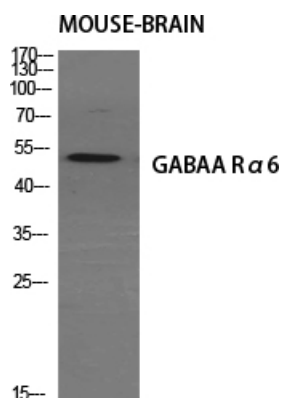
Research Area

Neuroactive ligand-receptor interaction;

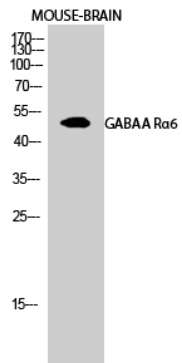
Image Data



Western blot analysis of lysates from HeLa and Jurkat cells, using GABRA6 Antibody. The lane on the right is blocked with the synthesized peptide.



Western Blot analysis of various cells using GABAA R α 6 Polyclonal Antibody diluted at 1: 500



Western Blot analysis of MOUSE-BRAIN cells using GABAA Rα6 Polyclonal Antibody diluted at 1: 500