

---

**Product Name: GABAA R $\alpha$ 4 Rabbit Polyclonal Antibody****Catalog #: APRab11234**

For research use only.

**Summary**

<b>Description</b>	Rabbit polyclonal Antibody
<b>Host</b>	Rabbit
<b>Application</b>	WB,ELISA
<b>Reactivity</b>	Human,Mouse,Rat
<b>Conjugation</b>	Unconjugated
<b>Modification</b>	Unmodified
<b>Isotype</b>	IgG
<b>Clonality</b>	Polyclonal
<b>Form</b>	Liquid
<b>Concentration</b>	1mg/ml
<b>Storage</b>	Aliquot and store at -20°C (valid for 12 months). Avoid freeze/thaw cycles.
<b>Shipping</b>	Ice bags
<b>Buffer</b>	Liquid in PBS containing 50% glycerol, 0.5% protective protein and 0.02% New type preservative N.
<b>Purification</b>	Affinity purification

**Application**

<b>Dilution Ratio</b>	WB 1:500-1:2000,ELISA 1:20000-1:40000
<b>Molecular Weight</b>	60kDa

**Antigen Information**

<b>Gene Name</b>	GABRA4
<b>Alternative Names</b>	GABRA4; Gamma-aminobutyric acid receptor subunit alpha-4; GABA(A) receptor subunit alpha-4
<b>Gene ID</b>	2557.0
<b>SwissProt ID</b>	P48169
<b>Immunogen</b>	The antiserum was produced against synthesized peptide derived from human GABRA4. AA range:81-130

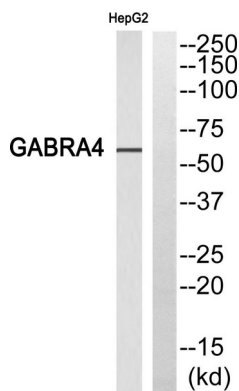
**Background**

Gamma-aminobutyric acid (GABA) is the major inhibitory neurotransmitter in the mammalian brain where it acts at GABA-A receptors, which are ligand-gated chloride channels. Chloride conductance of these channels can be modulated by agents such as benzodiazepines that bind to the GABA-A receptor. At least 16 distinct subunits of GABA-A receptors have been identified. This gene encodes subunit alpha-4, which is involved in the etiology of autism and eventually increases autism risk through interaction with another subunit, gamma-aminobutyric acid receptor beta-1 (GABRB1). Alternatively spliced transcript variants encoding different isoforms have been found in this gene.[provided by RefSeq, Feb 2011],function:GABA, the major inhibitory neurotransmitter in the vertebrate brain, mediates neuronal inhibition by binding to the GABA/benzodiazepine receptor and opening an integral chloride channel.,induction:The alpha4 beta2 gamma 2L receptor is not repressed by diazepam.,online information:Forbidden fruit - Issue 56 of March 2005,similarity:Belongs to the ligand-gated ionic channel (TC 1.A.9) family.,subunit:Generally pentameric. There are five types of GABA(A) receptor chains: alpha, beta, gamma, delta, and rho.,

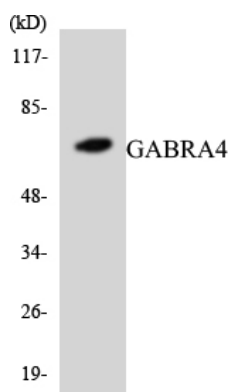
## Research Area

Neuroactive ligand-receptor interaction;

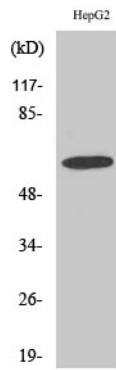
## Image Data



Western blot analysis of GABRA4 Antibody. The lane on the right is blocked with the GABRA4 peptide.



Western blot analysis of the lysates from COLO205 cells using GABRA4 antibody.



Western Blot analysis of various cells using GABAA R $\alpha$ 4 Polyclonal Antibody diluted at 1: 1000