

Product Name: GABA T-1 Rabbit Polyclonal Antibody**Catalog #: APRab11231**

For research use only.

Summary

Description	Rabbit polyclonal Antibody
Host	Rabbit
Application	WB,IHC,ICC/IF,ELISA
Reactivity	Human,Mouse,Rat
Conjugation	Unconjugated
Modification	Unmodified
Isotype	IgG
Clonality	Polyclonal
Form	Liquid
Concentration	1mg/ml
Storage	Aliquot and store at -20°C (valid for 12 months). Avoid freeze/thaw cycles.
Shipping	Ice bags
Buffer	Liquid in PBS containing 50% glycerol, 0.5% protective protein and 0.02% New type preservative N.
Purification	Affinity purification

Application

Dilution Ratio	WB 1:500-1:2000,IHC 1:50-1:200,ICC/IF 1:50-1:200,ELISA 1:10000-1:20000
Molecular Weight	50kDa

Antigen Information

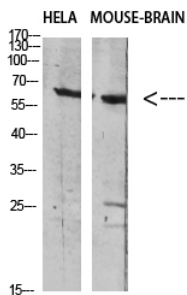
Gene Name	SLC6A1 GABATR GABT1 GAT1
Alternative Names	Sodium- and chloride-dependent GABA transporter 1 (GAT-1;Solute carrier family 6 member 1)
Gene ID	6529.0
SwissProt ID	P30531
Immunogen	The antiserum was produced against synthesized peptide derived from the Internal region of human SLC6A1. AA range:170-220

Background

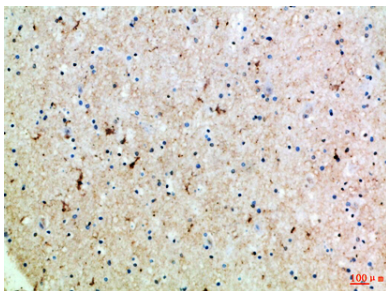
The SLC6A1 gene encodes a gamma-aminobutyric acid (GABA) transporter, which removes GABA from the synaptic cleft (Hirunsatit et al., 2009 [PubMed 19077666]).[supplied by OMIM, Jul 2009],domain:The PDZ domain-binding motif is involved in the interaction with MPP5.,function:Terminates the action of GABA by its high affinity sodium-dependent reuptake into presynaptic terminals.,miscellaneous:This protein is the target of psychomotor stimulants such as amphetamines or cocaine.,similarity:Belongs to the sodium:neurotransmitter symporter (SNF) family.,subcellular location:Localized at the plasma membrane and in a subset of intracellular vesicles. Localized at the presynaptic terminals of interneurons.,subunit:Interacts with MPP5.,

Research Area

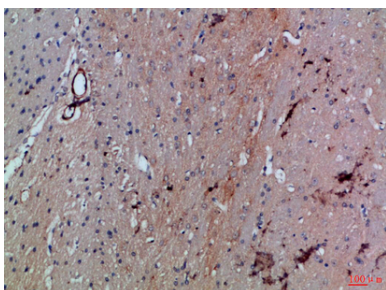
Image Data



Western blot analysis of HELA MOUSE-BRAIN Cell Lysate using antibody. Secondary antibody was diluted at 1:20000



Immunohistochemical analysis of paraffin-embedded Human-brain, antibody was diluted at 1:100



Immunohistochemical analysis of paraffin-embedded Rat-brain, antibody was diluted at 1:100