

**Product Name: Fyb Rabbit Polyclonal Antibody****Catalog #: APRab11203**

For research use only.

**Summary**

<b>Description</b>	Rabbit polyclonal Antibody
<b>Host</b>	Rabbit
<b>Application</b>	WB,ELISA
<b>Reactivity</b>	Human,Mouse,Rat
<b>Conjugation</b>	Unconjugated
<b>Modification</b>	Unmodified
<b>Isotype</b>	IgG
<b>Clonality</b>	Polyclonal
<b>Form</b>	Liquid
<b>Concentration</b>	1mg/ml
<b>Storage</b>	Aliquot and store at -20°C (valid for 12 months). Avoid freeze/thaw cycles.
<b>Shipping</b>	Ice bags
<b>Buffer</b>	Liquid in PBS containing 50% glycerol, 0.5% protective protein and 0.02% New type preservative N.
<b>Purification</b>	Affinity purification

**Application**

<b>Dilution Ratio</b>	WB 1:500-1:2000,ELISA 1:20000-1:40000
<b>Molecular Weight</b>	85kDa

**Antigen Information**

<b>Gene Name</b>	FYB
<b>Alternative Names</b>	FYB; SLAP130; FYN-binding protein; Adhesion and degranulation promoting adaptor protein; ADAP; FYB-120/130; p120/p130; FYN-T-binding protein; SLAP-130; SLP-76-associated phosphoprotein
<b>Gene ID</b>	2533.0
<b>SwissProt ID</b>	O15117
<b>Immunogen</b>	Synthesized peptide derived from Fyb . at AA range: 620-700

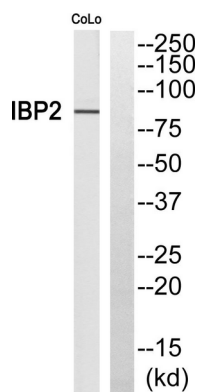
**Background**

The protein encoded by this gene is an adapter for the FYN protein and LCP2 signaling cascades in T-cells. The encoded protein is involved in platelet activation and controls the expression of interleukin-2. Three transcript variants encoding different isoforms have been found for this gene. [provided by RefSeq, Jul 2011],function:Acts as an adapter protein of the FYN and LCP2 signaling cascades in T cells. Modulates the expression of interleukin-2 (IL-2). Involved in platelet activation. Prevents the degradation of SKAP1 and SKAP2.,PTM:T-cell receptor ligation leads to increased tyrosine phosphorylation.,similarity:Contains 1 SH3 domain.,subunit:Part of a complex consisting of SKAP2, FYB and PTPNS1. Part of a complex consisting of SKAP2, FYB and LILRB3 (By similarity). Interacts with FYN, LCP2, SKAP1 and SKAP2.,tissue specificity:Expressed in hematopoietic tissues such as myeloid and T-cells, spleen and thymus. Not expressed in B-cells, nor in non-lymphoid tissues.,

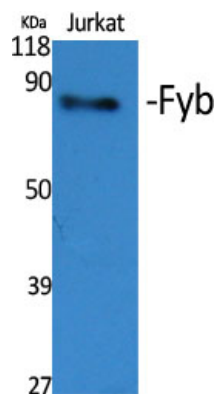
## Research Area

Signal Transduction

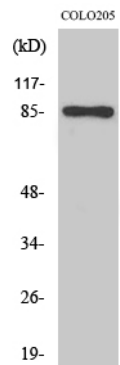
## Image Data



Western blot analysis of FYB Antibody. The lane on the right is blocked with the FYB peptide.



Western Blot analysis of various cells using Fyb Polyclonal Antibody



Western Blot analysis of COLO205 cells using Fyb Polyclonal Antibody