

Product Name: FXR2 Rabbit Polyclonal Antibody**Catalog #: APRab11197**

For research use only.

Summary

Description	Rabbit polyclonal Antibody
Host	Rabbit
Application	WB,IHC,ICC/IF,ELISA
Reactivity	Human,Mouse
Conjugation	Unconjugated
Modification	Unmodified
Isotype	IgG
Clonality	Polyclonal
Form	Liquid
Concentration	1mg/ml
Storage	Aliquot and store at -20°C (valid for 12 months). Avoid freeze/thaw cycles.
Shipping	Ice bags
Buffer	Liquid in PBS containing 50% glycerol, 0.5% protective protein and 0.02% New type preservative N.
Purification	Affinity purification

Application

Dilution Ratio	WB 1:500-1:2000,IHC 1:100-1:300,ICC/IF 1:200-1:1000,ELISA 1:5000-1:20000
Molecular Weight	74kDa

Antigen Information

Gene Name	FXR2
Alternative Names	FXR2; FMR1L2; Fragile X mental retardation syndrome-related protein 2
Gene ID	9513.0
SwissProt ID	P51116
Immunogen	The antiserum was produced against synthesized peptide derived from human FXR2. AA range:551-600

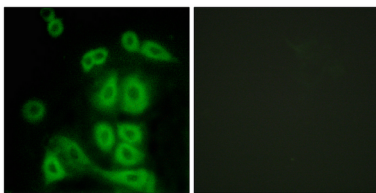
Background

The protein encoded by this gene is a RNA binding protein containing two KH domains and one RCG box, which is similar to

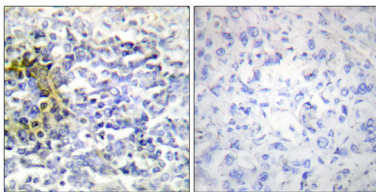
FMRP and FXR1. It associates with polyribosomes, predominantly with 60S large ribosomal subunits. This encoded protein may self-associate or interact with FMRP and FXR1. It may have a role in the development of fragile X mental retardation syndrome. [provided by RefSeq, Jul 2008],function:RNA-binding protein.,similarity:Belongs to the FMR1 family.,similarity:Contains 2 KH domains.,subunit:Interacts with FMR1 and FXR1. Interacts with CYFIP2 but not with CYFIP1. Interacts with TDRD3.,

Research Area

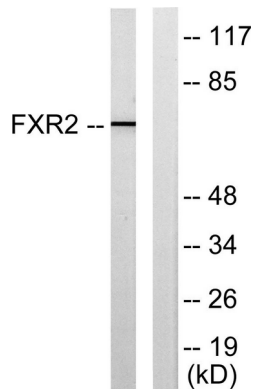
Image Data



Immunofluorescence analysis of A549 cells, using FXR2 Antibody. The picture on the right is blocked with the synthesized peptide.



Immunohistochemistry analysis of paraffin-embedded human lung carcinoma tissue, using FXR2 Antibody. The picture on the right is blocked with the synthesized peptide.



Western blot analysis of lysates from COLO205 cells, using FXR2 Antibody. The lane on the right is blocked with the synthesized peptide.