

Product Name: FSH β Rabbit Polyclonal Antibody**Catalog #: APRab11168**

For research use only.

Summary

Description	Rabbit polyclonal Antibody
Host	Rabbit
Application	IHC, ICC/IF, ELISA
Reactivity	Human, Mouse, Rat
Conjugation	Unconjugated
Modification	Unmodified
Isotype	IgG
Clonality	Polyclonal
Form	Liquid
Concentration	1mg/ml
Storage	Aliquot and store at -20°C (valid for 12 months). Avoid freeze/thaw cycles.
Shipping	Ice bags
Buffer	Liquid in PBS containing 50% glycerol, 0.5% protective protein and 0.02% New type preservative N.
Purification	Affinity purification

Application

Dilution Ratio IHC 1:50-1:200, ICC/IF 1:50-1:200, ELISA 1:10000-1:20000

Molecular Weight

Antigen Information

Gene Name	FSHB
Alternative Names	Follitropin subunit beta (Follicle-stimulating hormone beta subunit; FSH-B; FSH-beta; Follitropin beta chain)
Gene ID	2488.0
SwissProt ID	P01225
Immunogen	Synthetic peptide from human protein at AA range: 10-50

Background

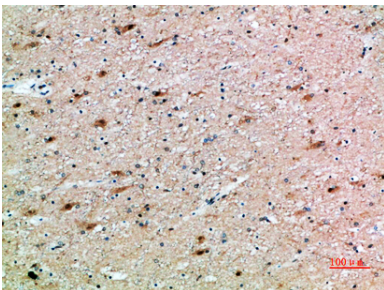
follicle stimulating hormone beta subunit (FSHB) Homo sapiens The pituitary glycoprotein hormone family includes follicle-

stimulating hormone, luteinizing hormone, chorionic gonadotropin, and thyroid-stimulating hormone. All of these glycoproteins consist of an identical alpha subunit and a hormone-specific beta subunit. This gene encodes the beta subunit of follicle-stimulating hormone. In conjunction with luteinizing hormone, follicle-stimulating hormone induces egg and sperm production. Alternative splicing results in two transcript variants encoding the same protein. [provided by RefSeq, Jul 2008],disease:Defects in FSHB are a cause of isolated follicle-stimulating hormone deficiency (IFSHD) [MIM:229070]. Selective follicle-stimulating hormone deficiency is an uncommon cause of infertility, producing amenorrhea and hypogonadism in women and oligo or azoospermia with normal testosterone levels in normally virilised men.,function:Stimulates development of follicle and spermatogenesis in the reproductive organs.,online information:Follicle-stimulating hormone entry,online information:The Singapore human mutation and polymorphism database,pharmaceutical:Available under the names Gonal-F or Metrodin HP (Serono) and Puregon (Organon). Used in the treatment of infertility in women with proven hypopituitarism or who have not responded to clomifene; or in superovulation treatment for assisted conception (such as in vitro fertilization). Metrodin HP is also used in the treatment of hypogonadotrophic hypogonadism in men for the stimulation of spermatogenesis.,similarity:Belongs to the glycoprotein hormones subunit beta family.,subunit:Heterodimer of a common alpha chain and a unique beta chain which confers biological specificity to thyrotropin, lutropin, follitropin and gonadotropin.,

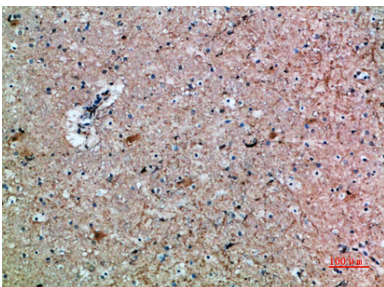
Research Area

Neuroactive ligand-receptor interaction;GnRH;

Image Data



Immunohistochemical analysis of paraffin-embedded human-brain, antibody was diluted at 1:200



Immunohistochemical analysis of paraffin-embedded human-brain, antibody was diluted at 1:200