

Product Name: Frizzled-7 Rabbit Polyclonal Antibody
Catalog #: APRab11148



Summary

Production Name	Frizzled-7 Rabbit Polyclonal Antibody
Description	Rabbit Polyclonal Antibody
Host	Rabbit
Application	WB,FC,IF-P,IF-F,ICC/IF,ELISA
Reactivity	Human,Mouse

Performance

Conjugation	Unconjugated
Modification	Unmodified
Isotype	IgG
Clonality	Polyclonal
Form	Liquid
Storage	Store at 4°C short term. Aliquot and store at -20°C long term. Avoid freeze/thaw cycles.
Buffer	Liquid in PBS containing 50% glycerol, 0.5% protective protein and 0.02% New type preservative N.
Purification	Affinity purification

Immunogen

Gene Name	FZD7
Alternative Names	FZD7; Frizzled-7; Fz-7; hFz7; FzE3
Gene ID	8324.0
SwissProt ID	O75084.The antiserum was produced against synthesized peptide derived from human FZD7. AA range:45-94

Application

Dilution Ratio	WB 1:500-2000, Flow Cyt 1:50-200, IF-P/IF-F/ICC/IF/ICC 1:100-500, ELISA 1:5000-20000
Molecular Weight	64kDa

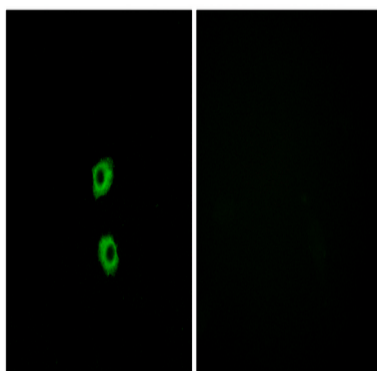
Background

frizzled class receptor 7(FZD7) Homo sapiens Members of the 'frizzled' gene family encode 7-transmembrane domain proteins that are receptors for Wnt signaling proteins. The FZD7 protein contains an N-terminal signal sequence, 10 cysteine residues typical of the cysteine-rich extracellular domain of Fz family members, 7 putative transmembrane domains, and an intracellular C-terminal tail with a PDZ domain-binding motif. FZD7 gene expression may downregulate APC function and enhance beta-catenin-mediated signals in poorly differentiated human esophageal carcinomas. [provided by RefSeq, Jul 2008],domain:Lys-Thr-X-X-X-Trp motif is involved in the activation of the Wnt/beta-catenin signaling pathway.,domain:The FZ domain is involved in binding with Wnt ligands.,function:Receptor for Wnt proteins. Most of frizzled receptors are coupled to the beta-catenin canonical signaling pathway, which leads to the activation of disheveled proteins, inhibition of GSK-3 kinase, nuclear accumulation of beta-catenin and activation of Wnt target genes. A second signaling pathway involving PKC and calcium fluxes has been seen for some family members, but it is not yet clear if it represents a distinct pathway or if it can be integrated in the canonical pathway, as PKC seems to be required for Wnt-mediated inactivation of GSK-3 kinase. Both pathways seem to involve interactions with G-proteins. May be involved in transduction and intercellular transmission of polarity information during tissue morphogenesis and/or in differentiated tissues.,similarity:Belongs to the G-protein coupled receptor Fz/Smo family.,similarity:Contains 1 FZ (frizzled) domain.,subunit:Interacts with MAGI3.,tissue specificity:High expression in adult skeletal muscle and fetal kidney, followed by fetal lung, adult heart, brain, and placenta. Specifically expressed in squamous cell esophageal carcinomas.,

Research Area

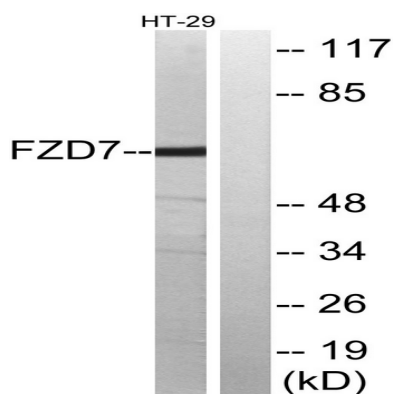
WNT;WNT-T CELLMelanogenesis;Pathways in cancer;Colorectal cancer;Basal cell carcinoma;

Image Data

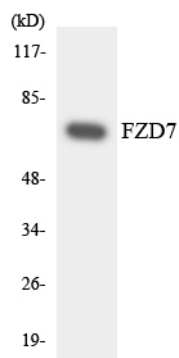


Immunofluorescence analysis of MCF7 cells, using FZD7 Antibody. The picture on the right is blocked with the synthesized peptide.

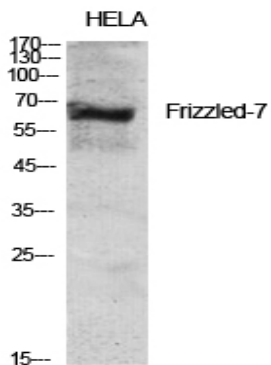
Product Name: Frizzled-7 Rabbit Polyclonal Antibody
Catalog #: APRab11148



Western blot analysis of lysates from HT-29 cells, using FZD7 Antibody. The lane on the right is blocked with the synthesized peptide.

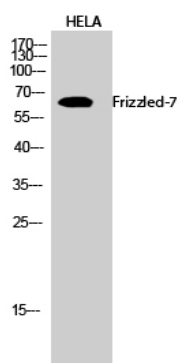


Western blot analysis of the lysates from HUVECcells using FZD7 antibody.



Western Blot analysis of various cells using Frizzled-7 Polyclonal Antibody diluted at 1: 2000

Product Name: Frizzled-7 Rabbit Polyclonal Antibody
Catalog #: APRab11148



Western Blot analysis of HELA cells using Frizzled-7 Polyclonal Antibody diluted at 1: 2000

Note

For research use only.