

Product Name: Fra-1 Rabbit Polyclonal Antibody**Catalog #: APRab11128**

For research use only.

Summary

Description	Rabbit polyclonal Antibody
Host	Rabbit
Application	WB,IHC,ICC/IF,ELISA
Reactivity	Human,Mouse,Rat
Conjugation	Unconjugated
Modification	Unmodified
Isotype	IgG
Clonality	Polyclonal
Form	Liquid
Concentration	1mg/ml
Storage	Aliquot and store at -20°C (valid for 12 months). Avoid freeze/thaw cycles.
Shipping	Ice bags
Buffer	Liquid in PBS containing 50% glycerol, 0.5% protective protein and 0.02% New type preservative N.
Purification	Affinity purification

Application

Dilution Ratio	WB 1:500-1:2000,IHC 1:100-1:300,ICC/IF 1:50-1:200,ELISA 1:10000-1:20000
Molecular Weight	43kDa

Antigen Information

Gene Name	FOSL1
Alternative Names	FOSL1; FRA1; Fos-related antigen 1; FRA-1
Gene ID	8061.0
SwissProt ID	P15407
Immunogen	The antiserum was produced against synthesized peptide derived from human Fra-1. AA range:101-150

Background

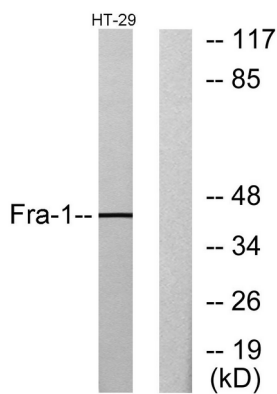
The Fos gene family consists of 4 members: FOS, FOSB, FOSL1, and FOSL2. These genes encode leucine zipper proteins that can

dimerize with proteins of the JUN family, thereby forming the transcription factor complex AP-1. As such, the FOS proteins have been implicated as regulators of cell proliferation, differentiation, and transformation. Several transcript variants encoding different isoforms have been found for this gene. [provided by RefSeq, Jul 2014],similarity:Belongs to the bZIP family.,similarity:Belongs to the bZIP family. Fos subfamily.,similarity:Contains 1 bZIP domain.,subunit:Heterodimer.,

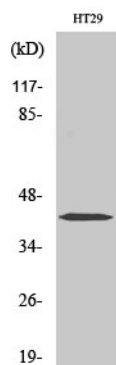
Research Area

WNT;WNT-T CELL

Image Data



Western blot analysis of lysates from HT-29 cells, using Fra-1 Antibody. The lane on the right is blocked with the synthesized peptide.



Western Blot analysis of various cells using Fra-1 Polyclonal Antibody diluted at 1:2000