
Product Name: FoxJ1 Rabbit Polyclonal Antibody**Catalog #: APRab11089**

For research use only.

Summary

Description	Rabbit polyclonal Antibody
Host	Rabbit
Application	WB,IHC,ICC/IF,ELISA
Reactivity	Human,Mouse,Rat
Conjugation	Unconjugated
Modification	Unmodified
Isotype	IgG
Clonality	Polyclonal
Form	Liquid
Concentration	1mg/ml
Storage	Aliquot and store at -20°C (valid for 12 months). Avoid freeze/thaw cycles.
Shipping	Ice bags
Buffer	Liquid in PBS containing 50% glycerol, 0.5% protective protein and 0.02% New type preservative N.
Purification	Affinity purification

Application

Dilution Ratio	WB 1:500-1:2000,IHC 1:100-1:300,ICC/IF 1:50-1:200,ELISA 1:10000-1:20000
Molecular Weight	60kDa

Antigen Information

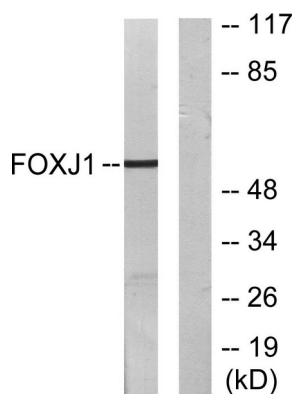
Gene Name	FOXJ1
Alternative Names	FOXJ1; FKHL13; HFH4; Forkhead box protein J1; Forkhead-related protein FKHL13; Hepatocyte nuclear factor 3 forkhead homolog 4; HFH-4
Gene ID	2302.0
SwissProt ID	Q92949
Immunogen	The antiserum was produced against synthesized peptide derived from human FOXJ1. AA range:271-320

Background

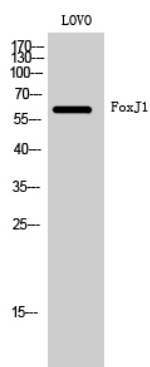
This gene encodes a member of the forkhead family of transcription factors. Similar genes in zebrafish and mouse have been shown to regulate the transcription of genes that control the production of motile cilia. The mouse ortholog also functions in the determination of left-right asymmetry. Polymorphisms in this gene are associated with systemic lupus erythematosus and allergic rhinitis.[provided by RefSeq, Sep 2009],developmental stage:Expressed in developing lung, kidney and central nervous system.,disease:Genetic variations in FOXJ1 may be associated with susceptibility to allergic rhinitis (ALRH) [MIM:607154]. Allergic rhinitis is a common disease of complex inheritance and is characterized by mucosal inflammation caused by allergen exposure.,function:May play an important role in cell fate determination during lung development and in spermatogenesis.,similarity:Contains 1 fork-head DNA-binding domain.,tissue specificity:Testis, oviduct, lung and brain cortex.,

Research Area

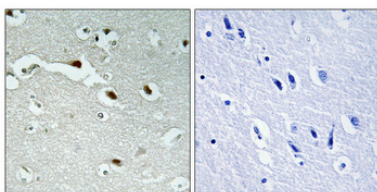
Image Data



Western blot analysis of lysates from LOVO cells, using FOXJ1 Antibody. The lane on the right is blocked with the synthesized peptide.



Western blot analysis of LOVO cells using FoxJ1 Polyclonal Antibody.



Immunohistochemical analysis of paraffin-embedded Human brain. Antibody was diluted at 1:100 (4°, overnight). High-pressure and temperature Tris-EDTA, pH 8.0 was used for antigen retrieval. Negative control (right) obtained from antibody was pre-absorbed by immunogen peptide.