

Product Name: FoxD4L1 Rabbit Polyclonal Antibody**Catalog #: APRab11083**

For research use only.

Summary

Description	Rabbit polyclonal Antibody
Host	Rabbit
Application	WB,ELISA
Reactivity	Human,Rat,Mouse
Conjugation	Unconjugated
Modification	Unmodified
Isotype	IgG
Clonality	Polyclonal
Form	Liquid
Concentration	1mg/ml
Storage	Aliquot and store at -20°C (valid for 12 months). Avoid freeze/thaw cycles.
Shipping	Ice bags
Buffer	Liquid in PBS containing 50% glycerol, 0.5% protective protein and 0.02% New type preservative N.
Purification	Affinity purification

Application

Dilution Ratio	WB 1:500-1:2000,ELISA 1:20000-1:40000
Molecular Weight	45kDa

Antigen Information

Gene Name	FOXD4L1
Alternative Names	FOXD4L1; Forkhead box protein D4-like 1; FOXD4-like 1
Gene ID	200350.0
SwissProt ID	Q9NU39
Immunogen	Synthesized peptide derived from FoxD4L1 . at AA range: 320-400

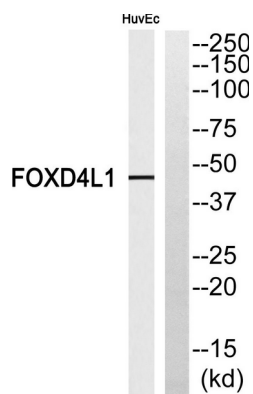
Background

forkhead box D4-like 1(FOXD4L1) Homo sapiens This gene is a member of the forkhead/winged-helix (FOX) family of transcription factors with highly conserved FOX DNA-binding domains. Members of the FOX family of transcription factors are

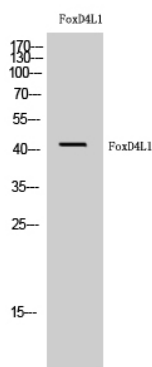
regulators of embryogenesis and may play a role in human cancer. This gene lies in a region of chromosome 2 that surrounds the site where two ancestral chromosomes fused to form human chromosome 2. This region is duplicated elsewhere in the human genome, primarily in subtelomeric and pericentromeric locations, thus multiple copies of this gene have been found. [provided by RefSeq, Jul 2008],similarity:Contains 1 fork-head DNA-binding domain.,

Research Area

Image Data



Western blot analysis of FOXD4L1 Antibody. The lane on the right is blocked with the FOXD4L1 peptide.



Western Blot analysis of HuvEc cells using FoxD4L1 Polyclonal Antibody cells nucleus extracted by Minute TM Cytoplasmic and Nuclear Fractionation kit (SC-003, Invent biotech, MN, USA) .