

Product Name: Formin 2 Rabbit Polyclonal Antibody**Catalog #: APRab11068**

For research use only.

Summary

Description	Rabbit polyclonal Antibody
Host	Rabbit
Application	IHC, ICC/IF, ELISA
Reactivity	Human, Mouse
Conjugation	Unconjugated
Modification	Unmodified
Isotype	IgG
Clonality	Polyclonal
Form	Liquid
Concentration	1mg/ml
Storage	Aliquot and store at -20°C (valid for 12 months). Avoid freeze/thaw cycles.
Shipping	Ice bags
Buffer	Liquid in PBS containing 50% glycerol, 0.5% protective protein and 0.02% New type preservative N.
Purification	Affinity purification

Application

Dilution Ratio IHC 1:100-1:300, ICC/IF 1:50-1:200, ELISA 1:20000-1:40000

Molecular Weight

Antigen Information

Gene Name	FMN2
Alternative Names	FMN2; Formin-2
Gene ID	56776.0
SwissProt ID	Q9NZ56
Immunogen	The antiserum was produced against synthesized peptide derived from human FMN2. AA range:1541-1590

Background

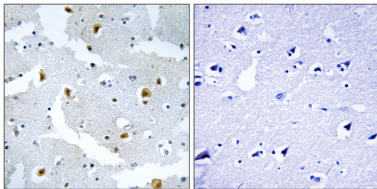
This gene is a member of the formin homology protein family. The encoded protein is thought to have essential roles in

organization of the actin cytoskeleton and in cell polarity. Mutations in this gene have been associated with mental retardation autosomal recessive 47 (MRT47). Alternatively spliced transcript variants have been identified. [provided by RefSeq, Mar 2015],PTM:Phosphorylated upon DNA damage, probably by ATM or ATR.,sequence caution:Contaminating sequence. Sequence of unknown origin in the C-terminal part.,similarity:Belongs to the formin homology family. Cappuccino subfamily.,similarity:Contains 1 FH1 (formin homology 1) domain.,similarity:Contains 1 FH2 (formin homology 2) domain.,tissue specificity:Expressed almost exclusively in the developing and mature central nervous system.,

Research Area

Dorso-ventral axis formation;

Image Data



Immunohistochemistry analysis of paraffin-embedded human brain tissue, using FMN2 Antibody. The picture on the right is blocked with the synthesized peptide.