

---

**Product Name: Flotillin-2 Rabbit Polyclonal Antibody****Catalog #: APRab11031**

For research use only.

**Summary**

<b>Description</b>	Rabbit polyclonal Antibody
<b>Host</b>	Rabbit
<b>Application</b>	WB,ELISA
<b>Reactivity</b>	Human,Mouse,Rat
<b>Conjugation</b>	Unconjugated
<b>Modification</b>	Unmodified
<b>Isotype</b>	IgG
<b>Clonality</b>	Polyclonal
<b>Form</b>	Liquid
<b>Concentration</b>	1mg/ml
<b>Storage</b>	Aliquot and store at -20°C (valid for 12 months). Avoid freeze/thaw cycles.
<b>Shipping</b>	Ice bags
<b>Buffer</b>	Liquid in PBS containing 50% glycerol, 0.5% protective protein and 0.02% New type preservative N.
<b>Purification</b>	Affinity purification

**Application**

<b>Dilution Ratio</b>	WB 1:500-1:2000,ELISA 1:5000-1:20000
<b>Molecular Weight</b>	46kDa

**Antigen Information**

<b>Gene Name</b>	FLOT2
<b>Alternative Names</b>	FLOT2; ESA1; M17S1; Flotillin-2; Epidermal surface antigen; ESA; Membrane component chromosome 17 surface marker 1
<b>Gene ID</b>	2319.0
<b>SwissProt ID</b>	Q14254
<b>Immunogen</b>	The antiserum was produced against synthesized peptide derived from human Flotillin-2. AA range:95-144

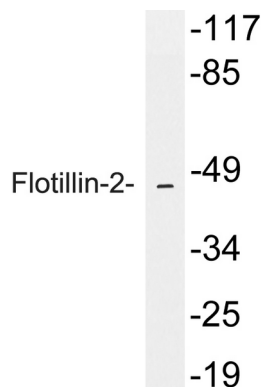
**Background**

Caveolae are small domains on the inner cell membrane involved in vesicular trafficking and signal transduction. This gene encodes a caveolae-associated, integral membrane protein, which is thought to function in neuronal signaling. [provided by RefSeq, Jul 2008],function:May act as a scaffolding protein within caveolar membranes, functionally participating in formation of caveolae or caveolae-like vesicles. May be involved in epidermal cell adhesion and epidermal structure and function.,similarity:Belongs to the band 7/mec-2 family. Flotillin subfamily.,subcellular location:Membrane-associated protein of caveolae.,subunit:Heterooligomeric complex of flotillin-1 and flotillin-2 and caveolin-1 and caveolin-2.,tissue specificity:In skin, expressed in epidermis and epidermal appendages but not in dermis. Expressed in all layers of the epidermis except the basal layer. In hair follicles, expressed in the suprabasal layer but not the basal layer. Also expressed in melanoma and carcinoma cell lines, fibroblasts and foreskin melanocytes.,

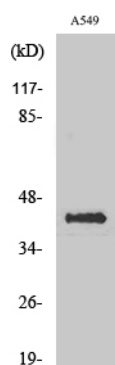
## Research Area

Insulin\_Receptor;

## Image Data



Western blot analysis of lysate from A549 cells, using Flotillin-2 antibody.



Western Blot analysis of various cells using Flotillin-2 Polyclonal Antibody