

Product Name: Fibulin-3 Rabbit Polyclonal Antibody**Catalog #: APRab10979**

For research use only.

Summary

Description	Rabbit polyclonal Antibody
Host	Rabbit
Application	WB,IHC,ICC/IF,ELISA
Reactivity	Human,Mouse,Rat
Conjugation	Unconjugated
Modification	Unmodified
Isotype	IgG
Clonality	Polyclonal
Form	Liquid
Concentration	1mg/ml
Storage	Aliquot and store at -20°C (valid for 12 months). Avoid freeze/thaw cycles.
Shipping	Ice bags
Buffer	Liquid in PBS containing 50% glycerol, 0.5% protective protein and 0.02% New type preservative N.
Purification	Affinity purification

Application

Dilution Ratio	WB 1:500-1:2000,IHC 1:100-1:300,ICC/IF 1:50-1:200,ELISA 1:5000-1:20000
Molecular Weight	55kDa

Antigen Information

Gene Name	EFEMP1
Alternative Names	EFEMP1; FBLN3; FBNL; EGF-containing fibulin-like extracellular matrix protein 1; Extracellular protein S1-5; Fibrillin-like protein; Fibulin-3; FIBL-3
Gene ID	2202.0
SwissProt ID	Q12805
Immunogen	The antiserum was produced against synthesized peptide derived from human EFEMP1. AA range:111-160

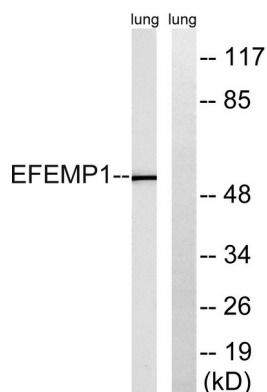
Background

This gene encodes a member of the fibulin family of extracellular matrix glycoproteins. Like all members of this family, the encoded protein contains tandemly repeated epidermal growth factor-like repeats followed by a C-terminus fibulin-type domain. This gene is upregulated in malignant gliomas and may play a role in the aggressive nature of these tumors. Mutations in this gene are associated with Doyme honeycomb retinal dystrophy. Alternatively spliced transcript variants that encode the same protein have been described.[provided by RefSeq, Nov 2009],alternative products:Experimental confirmation may be lacking for some isoforms,disease:Defects in EFEMP1 are a cause of Doyme honeycomb retinal dystrophy (DHRD) [MIM:126600]; also known as malattia leventinese (MLVT OR ML). DHRD is an autosomal dominant disease characterized by yellow-white deposits known as drusen that accumulate beneath the retinal pigment epithelium.,online information:Retina International's Scientific Newsletter,similarity:Belongs to the fibulin family,similarity:Contains 6 EGF-like domains,

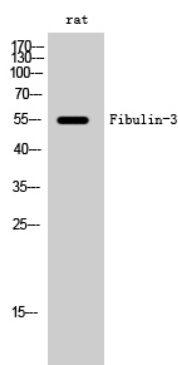
Research Area

Signal ; Signaling Pathway; Calcium Signaling; Calcium Binding Proteins; Neuroscience; Sensory System; Visual system

Image Data



Western blot analysis of lysates from rat lung, using EFEMP1 Antibody. The lane on the right is blocked with the synthesized peptide.



Western Blot analysis of rat cells using Fibulin-3 Polyclonal Antibody