
Product Name: Fibulin-2 Rabbit Polyclonal Antibody**Catalog #: APRab10978**

For research use only.

Summary

Description	Rabbit polyclonal Antibody
Host	Rabbit
Application	WB,IHC,ICC/IF,ELISA
Reactivity	Human,Rat,Mouse
Conjugation	Unconjugated
Modification	Unmodified
Isotype	IgG
Clonality	Polyclonal
Form	Liquid
Concentration	1mg/ml
Storage	Aliquot and store at -20°C (valid for 12 months). Avoid freeze/thaw cycles.
Shipping	Ice bags
Buffer	Liquid in PBS containing 50% glycerol, 0.5% protective protein and 0.02% New type preservative N.
Purification	Affinity purification

Application

Dilution Ratio	WB 1:500-1:2000,IHC 1:100-1:300,ICC/IF 1:200-1:1000,ELISA 1:20000-1:40000
Molecular Weight	130kDa

Antigen Information

Gene Name	FBLN2
Alternative Names	FBLN2; Fibulin-2; FIBL-2
Gene ID	2199.0
SwissProt ID	P98095
Immunogen	The antiserum was produced against synthesized peptide derived from human FBLN2. AA range:241-290

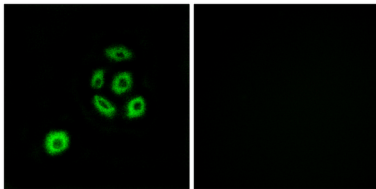
Background

This gene encodes an extracellular matrix protein, which belongs to the fibulin family. This protein binds various extracellular

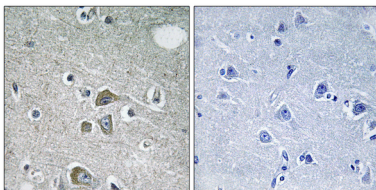
ligands and calcium. It may play a role during organ development, in particular, during the differentiation of heart, skeletal and neuronal structures. Alternatively spliced transcript variants encoding different isoforms have been identified. [provided by RefSeq, Jul 2008],developmental stage:Widely expressed during embryonic development. Primarily detected within the neuropithelium, spinal ganglia and peripheral nerves.,function:Its binding to fibronectin and some other ligands is calcium dependent.,similarity:Belongs to the fibulin family.,similarity:Contains 11 EGF-like domains.,similarity:Contains 3 anaphylatoxin-like domains.,subunit:Homotrimer; disulfide-linked. Interacts with LAMA2.,tissue specificity:Component of both basement membranes and other connective tissues. Expressed in heart, placenta and ovary.,

Research Area

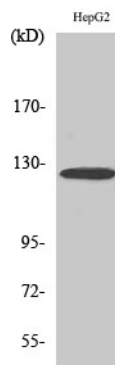
Image Data



Immunofluorescence analysis of A549 cells, using FBLN2 Antibody. The picture on the right is blocked with the synthesized peptide.



Immunohistochemistry analysis of paraffin-embedded human brain tissue, using FBLN2 Antibody. The picture on the right is blocked with the synthesized peptide.



Western Blot analysis of various cells using Fibulin-2 Polyclonal Antibody diluted at 1: 500